

Somfy RTS Motor Programming Instructions

Motor Programming Instructions have been rewritten by <https://www.AVOutlet.com>

We rewrite the Somfy instructions in an effort to make things a little easier to follow. There are however some subtle differences in the motors. Please refer to the included Somfy motor specific instructions if something is not working. Feel free to let us know if something is found to be incorrect.

Please Read and Follow These Instructions.

Please use the motor programming instructions provided here. The remote control instructions can be used for reference but they are not as easy to follow. A copy of the Somfy instructions are also provided for your reference.

Please read installation instructions and programming instructions completely prior to proceeding with installation and programming. Failure to do so can result in damage to the motor and or the shade.

Be prepared to stop the shade during programming. The programming step where you set the first stop limit (upper or lower whichever you do first) will activate the motor to move without stopping on its own. You will need to stop the motor at the next stop limit using the remote as indicated. Failure to stop the shade can result in shade or motor damage.

The motors **MUST** be installed in the tube and the assembly must be mounted into brackets to be able to program the motor.

Only apply power to the motor being programmed regardless if the other motors have been programmed or not. This will prevent inadvertent interaction with other motors. This is not possible for motors with built-in batteries like the R28WF, ST30WF etc. Motors with built-in batteries must be put to sleep.

We recommend mapping out the installation before proceeding. This will reduce set-up time and make life easier. Decide the channels and or additional remotes to be assigned to each shade in the installation. Each shade should be completely programmed before moving to the next. Have the necessary remotes and controls ready prior to proceeding.

All motors programmed to the same RTS channel will operate at the same time. If you want individual control of the motor, you must use separate channels on multi-channel remotes or separate single channel remotes

The remote controls are generally considered to be dummy devices as they do not store any motor or programming information. The motors are the intelligent devices. The motors store the shade operation limits in their memory and the motors also memorize the specific remotes or channels assigned to control them. Each motor can have up to 12 remotes or channels controlling them.

Note: The Telis 4 Remote Control is a 5 Channel Remote control. The 5th channel is all lights on. The 5th channel by default is not a group channel. This channel is not automatically assigned and must be programmed.

Please read the previous page before proceeding.

Step 1 - Assign a RTS Channel to the Motor

1-A) Select the RTS remote control and channel you want to use.

1-B) Press and Hold both the **UP** and **DOWN** buttons simultaneously until the motor jogs, then release. A jog is a movement in both directions.

If the motor does not respond, proceed to the “Resetting and Clearing the Motor Memory” Page(s) and reset the motor. If working with a built-in battery motor like the ST30WF you might need to wake the motor first.

Step 2 - Check Motor Direction and Change if Necessary – DO NOT SKIP

2-A) Check the direction of operation (the motor will operate in momentary fashion). Confirm that the UP button brings the shade UP and DOWN brings the shade DOWN.

2-B) **Changing the direction (If needed)**, Press and Hold the **STOP/MY** button until the motor jogs, then release. A jog is a movement in both directions. Re-Check the direction.

Step 3 - Set Lower and Upper Shade Limits

3-A) Move the shade to the desired lower limit position using the remote control. The shade will only move when the button is being pressed.

3-B) Press and Hold both the **STOP/MY** and **UP** buttons simultaneously until the motor begins to move up, then release. Be prepared to stop the shade manually using the **STOP/MY** button. Stop the shade and adjust to your desired upper limit position.

3-C) Press and Hold both the **STOP/MY** and **DOWN** buttons simultaneously until the motor begins to move Down, then release. The shade will move down to the already set lower limit position and will stop on its own.

Step 4 - Store the Limits in the Motor Memory

4-A) Press and Hold the **STOP/MY** button until the motor jogs. A jog is a movement in both directions. The limits are now recorded. The shade will NOT move automatically to a limit with one button press yet!! Perform the next step.

Step 5 - Exit and Save Initial Programming

5-A) Briefly Press and Release the program button on the remote control. The motor will jog once. A jog is a movement in both directions. The program button is typically on the backside of a hand-held remote control or front of a wireless wall switch. A paperclip will be needed to press the program button.

The shade should now move to the open and closed positions with a momentary press of the buttons.

The optional steps on the next page should be reviewed. You should program the MY position now as well as program additional channels of control if needed before moving on to another motor.

Optional Programming Tasks

These procedures can be done at any time after initial programming, but we do recommend performing all desired additional tasks before moving onto the next shade. All shades not being programmed should have the power disconnected be put to sleep.

Set the Customer Preferred MY Intermediate Position

- 1) Using the remote, position the shade to the location you would like as your intermediate customer preferred position
- 2) Press and Hold the **STOP/MY** button until the motor jogs, then release. A jog is a movement in both directions.

Note: Simply repeat this step if you want to change the intermediate position to a new position even if one has already been programmed.

Add a Remote or Channel to Control the Same Shade (If Desired)

- 1) To **ADD** another remote control or another RTS channel to the motor memory, Press and Hold the program button on the previously recorded remote control until the motor jogs. A jog is a movement in both directions.
- 2) Select the new remote or RTS channel to add to the motor memory. Briefly Press and Release the program button on the remote control. The motor will jog once. A jog is a movement in both directions.

Note: Some the older style motors require a Press and Hold of the program button for both steps. Please refer to the included motor specific instructions if you are having difficulties.

Delete a Remote or Channel from the Motor Memory

- 1) To **DELETE** a remote control or channel, Press and Hold the program button of a previously recorded channel or remote until the motor jogs. A jog is a movement in both directions. (This remote or channel is the one to keep)
- 2) Select the remote or channel to delete. Briefly Press and Release the program button on the remote control. The motor will jog once. A jog is a movement in both directions.

Note: Some the older style motors require a Press and Hold of the program button for both steps. Please refer to the included motor specific instructions if you are having difficulties.

Adjusting the Lower Limit

- 1) Move the shade to its current lower limit position and let it stop.
- 2) Press and Hold the **UP** and **DOWN** buttons simultaneously and until the motor jogs, then release. A jog is a movement in both directions.
- 3) Adjust to a new lower limit position. Press and Hold the **STOP/MY** button until the motor jogs, then release. A jog is a movement in both directions.

Adjusting the Upper Limit

- 1) Move the shade to its current upper limit position and let it stop.
- 2) Press and Hold the **UP** and **DOWN** buttons simultaneously until the motor jogs, then release. A jog is a movement in both directions.
- 3) Adjust to a new upper limit position. Press and Hold the **STOP/MY** button until the motor jogs, then release. A jog is a movement in both directions.

Resetting and Clearing the Motor Memory

This procedure works for all motors except the ST40 120VAC and ST50 120VAC Motors. The caveats of each motor are listed separately.

A paperclip will be needed to press the program button on some motors. These program buttons do not need to be pressed hard. If you are having difficulty pressing the button, please use a larger diameter paperclip.

Press and Hold the program button on the motor until the shade jogs 3 times while continuously pressing the button. One jog is a movement in both directions. There will be a pause between jogs so please be patient.

RU28 12VDC, R28WF Battery & ST30WF Battery RTS Motors

Same as above. The program button is rectangular and found on the motor head.

R28 12VDC RTS Motor (Older Version)

Same as above. The program button is in a hole on the motor head.

The reset procedure on older versions of the R28 motor only works if the motor has been completely programmed. Remove power for a minimum of 2 minutes if the motor is not resetting.

LT30 12VDC RTS Motor

Same as above. The program button is in a hole on the motor head.

Some older versions of this motor do not jog. Hold the program button until the LED next to the power connection stops blinking which is typically around 12 seconds.

ST30 RTS Motor (24VDC Version)

Same as above. The Sonesse 30 has two holes with recessed buttons. The white hole has the program button and the yellow is for manually activating the shade to move.

RU24WF, ST30UWF & ST40WF RTS Battery RTS Motors

Same as above. The program button is in a hole on the motor head.

ST40 120VAC & ST50 120VAC Motor Resetting and Clearing

This reset procedure is sometime finicky. Several attempts may be required.

1) Disconnect power for 2 seconds.

2) Connect power for 5 seconds.

Note: Somfy recommends 10-15 seconds but we found 5 seconds to work better.

3) Disconnect power for 2 Seconds

4) Connect power and then leave it on. The motor will rotate in one direction if the shade is between limits or will jog if at one of the programmed stops.

5) Press and Hold the programming button (App. 10 sec) on any RTS remote until the shade jogs twice. There will be a pause between the jogs. Do not release the program button until the second jog is complete. (The remote used does not have to be the one already programmed to the shade) The motor is now ready for programming from the beginning.

Built-in Battery Motor – Sleeping and Waking

Sleep – Temporary (App. 15 Minutes)

Press and Hold the program button on the motor head until the shade jogs once. A jog is a movement in both directions.

Press and Release the program button. The shade will jog twice. A jog is a movement in both directions.

Sleep – Until Wake (Motor must be programmed prior)

Press and Hold the program button on the motor head or remote control until the shade jogs once. A jog is a movement in both directions.

Press and Hold all three buttons Up, Stop/My/Down on the remote control until the shade jogs once. A jog is a movement in both directions.

Wake

Press and Release the program button on the motor head until the shade jogs once or plug in a charger. A jog is a movement in both directions.

Intentionally blank

www.somfy.com



Sonesse® 40 RTS



Ref: 5064823A



www.AVOutlet.com

CONTENT

1 Introduction

2 Safety

2.1 General information

2.2 General safety advice

3 Installation

4 Commissioning

4.1 Programming the RTS transmitter

4.2 Checking the rotation direction

4.3 Adjusting the end limits

4.4 Recording the RTS transmitter

4.5 Mode Selection: Roller or Tilting mode

4.6 Favorite position : MY position

Recording MY position.

5 Use

5.1 Up, Down, My: In roller mode

5.2 Up, Down, My: In tilting mode

6 Sun function

6.1 Introduction

6.2 Sun disappearing position

7 Modifying the settings

7.1 End limit re-adjustment

7.2 Favorite position : MY position

Changing the MY position / Delete the MY position

7.3 Modifying the motor rotation direction

7.4 Modifying the wheel rotation direction

7.5 Scroll wheel increment setting

7.6 Replacement of a lost remote control

7.7 Adding/Deleting RTS transmitter

7.8 Adding/Deleting RTS sensors

7.9 Erase the memory of the motor

8 Troubleshooting

9 Technical data

10 Environment

1 Introduction

Product Description

The Sonesse® 40 is a motor specially dedicated to interior applications. The Sonesse® 40 motor range can motorize all interior applications: Roller shades, Venetian blinds, Roman shades, Pleated & cellular shades, Projection screens. The Sonesse® 40 is designed to ensure quiet operations.

Warning: The Sonesse® 40 isn't compatible with wind functions.

2 Safety

2.1 General information

- This Somfy product must be installed by a professional motorisation and home automation installer, for whom these instructions are intended.
- Before installation, check that this product is compatible with the associated equipment and accessories.
- These instructions describe how to install, commission and use this product.
- Moreover, the installer must comply with current standards and legislation in the country in which the product is being installed, and inform his customers of the operating and maintenance conditions for the product.
- Any use outside the sphere of application specified by Somfy is not approved. Such use, or any failure to comply with the instructions given herein will invalidate the warranty, and Somfy refuses to accept liability.

2.2 Specific safety advice

The safety instructions that must be observed, besides the usual rules, are explained in these instructions and in the attached «Safety Instructions» document.

Never immerse the motor in liquid!



Avoid impacts!



Never drill holes in the motor!



Do not drop it!



3 Installation

Motor preparation

- 1) Fit the crown (a) and drive wheel (b) to the motor.
- 2) Measure the length (L) between the end of the drive wheel and the head end.

Tube preparation

- 1) Cut the tube to the required length.
 - 2) Deburr the tube and remove the debris.
- For smooth roller tubes, cut a notch with the following measurements: $e = 7 \text{ mm}$ $h = 10 \text{ mm}$

Motor/tube assembly

- 1) Slide the motor into the tube.
- For smooth roller tubes, position the notch previously cut on the crown.
- 2) Fix the tube to the motor with self-tapping screws or steel pop rivets depending on the dimension (L - 5 mm).

Mounting the motorized tube on the brackets

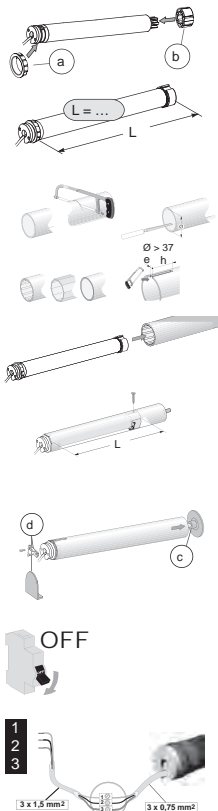
If necessary, screw the bracket interface on the motor head.

- 1) Mount the motorized tube on the end bracket (c).
- 2) Mount the motorized tube on the motor bracket (d).

Wiring

- 1) Switch off the power supply.
- 2) Connect the motor according to the information in the table below.

RANGE	1 Neutral	2 Live	3 Earth
230V-50HZ	Blue	Brown	NA
120V-60HZ	White	Black	Green
220V-60HZ	Blue	Brown	NA



4 Commissioning

4.1 Programming the RTS transmitter

Switch on the power supply.
Press the UP and DOWN buttons simultaneously on the RTS transmitter: the jogs (move up and down briefly) and the transmitter is preprogrammed in the motor

4.2 Checking the rotation direction

- 1) Press the RTS transmitter UP button:
 - a) If the shade is raised (a), the rotation direction is correct: move to the section entitled «Adjusting the end limits».
 - b) If the shade is lowered (b), the rotation direction is incorrect: move to the next step.
- 2) Press the RTS transmitter MY button until the shade jogs: the rotation direction has been modified.
- 3) Press the RTS transmitter UP button to check the rotation direction.

4.3 Adjusting the end limits

The limits can be set in any sequence.

- 1) Press and hold the UP button to move the shade to the desired UP position. If necessary adjust the Up position, using the UP or DOWN buttons.
- 2) Press the MY and DOWN buttons simultaneously and release them once the shade begins to move. The Up limit is memorized.
- 3) Press the MY button when it reaches the desired Down position.
If necessary adjust the Down position, using the UP or DOWN buttons.
- 4) Press the MY and UP buttons simultaneously and release them when the shade begins to move.
The Down limit is memorized. The shade moves up and will stop at its upper limit.
- 5) To confirm the end limits press and hold the MY button until the shade jogs. The end limits are recorded.



1



2



3



1



2



3



4



5



4.4 Recording the RTS transmitter

After recording the end limit:
Press briefly the programming button on the back of the transmitter. The shade jogs.
The transmitter is recorded.

OR

- 1) Switch off the current.
- 2) Switch on the current. The shade jogs.
- 3) Simultaneously press the UP and DOWN buttons on the RTS transmitter. The shade jogs.
The shade jogs.
- 4) Press briefly the programming button on the back of the transmitter. The shade jogs.
The transmitter is recorded.

4.5 Mode selection: Roller or Tilting mode

The Sonesse® 40 RTS is designed to work with 2 modes: Venetian blind mode or roller blind mode.

The Sonesse® 40 RTS is set by default to work in roller blind mode.

This feature allows the Sonesse® 40 RTS to be set according to the type of blind you are working with.

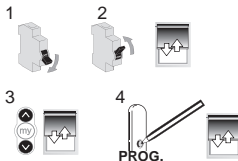
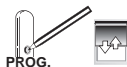
Move the shade away from the end limits.

- 1) Simultaneously press the UP and DOWN buttons until the shade jogs.
- 2) Press and hold the MY and DOWN buttons simultaneously until the shade jogs to change from Roller mode to Tilting mode.

4.6 Favorite position: MY position

Recording MY position.

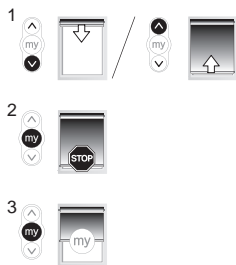
To set the MY position, move the shade to the desired position with the UP and DOWN buttons then press the MY button until the shade jogs.



5 Use

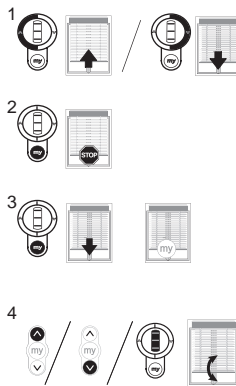
5.1 Up, Down, My: In roller mode

- 1) To move the shade from a limit to the other limit, press briefly the UP or DOWN button.
- 2) To stop the shade, press the MY button.
- 3) To move the shade to the MY position, press briefly the MY button.



5.2 Up, Down, My: In tilting mode

- 1) To move the shade from a limit to the other limit, press briefly (less than 0,5s) the UP or DOWN button.
 - 2) To stop the shade, press the MY button.
 - 3) To move the shade to the MY position, press briefly the MY button.
- The Venetian blind goes first to the down end-limit, then to the MY position.
- 4) To tilt the slats, press and hold the UP or DOWN button or use the scroll of the remote control until the slats reach the desired position.



6 Sun function

6.1 Introduction

For this function, you need a Telis Soliris transmitter.

By default, the Sun function is not active.

1) To activate the Sun function, press the SELECT button on the Telis Soliris transmitter until the shade jogs.

2) To deactivate the Sun function, press the SELECT button on the Telis Soliris transmitter until the shade jogs.

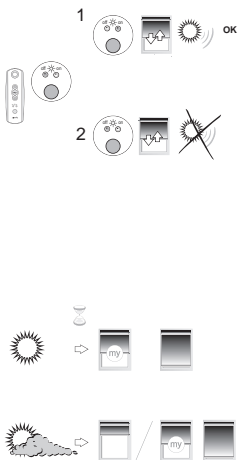
When the intensity of the daylight exceeds the threshold set by the Soliris sensor RTS, an order is sent to the shade after 2 min.

The shade goes to the MY position or to its down limit if no MY position has been memorised.

When the intensity of the daylight falls below the threshold set by the Soliris sensor RTS, the shade goes to the sun disappearing position or stays at its position (MY or Down limit) if no sun disappearing position has been memorised.

To set the sun disappearing position, see 6.2 part.

The Wind function is not compatible with this motor.



6.2 Sun disappearing position

This function is available only if a MY position is recorded.

1) Recording Sun disappearing position

Press and hold the MY and DOWN buttons until the shade moves.

In tilting mode : The shade will move to the lower limit and return to the MY position.

In roller mode: The shade will move to the MY position.

Move the shade to the desired position with the UP and DOWN buttons.

Press and hold the MY button until the shade jogs.

The Sun disappearing position is recorded.

2) Changing the Sun disappearing position

Press and hold the MY and DOWN buttons until the shade moves.

In tilting mode : The shade will move to the lower limit and return to the Sun disappearing position.

In roller mode: The shade will move to the Sun disappearing position.

Move the shade to the new desired position with the UP and DOWN buttons.

Press and hold the MY button until the shade jogs.

The Sun disappearing position is changed.

3) Delete the Sun disappearing position

Press and hold the MY and DOWN buttons until the shade moves.

In tilting mode : The shade will move to the lower limit and return to the Sun disappearing position.

In roller mode: The shade will move to the Sun disappearing position.

Press and hold the MY button until the shade jogs.

The Sun disappearing position is deleted.

1



2



3



7 Modifying the settings

7.1 End limit re-adjustment

UP LIMIT

- 1) Press the UP button, to move the shade to the limit to be readjusted.
- 2) Press and hold the UP and DOWN buttons simultaneously until the shade jogs.
- 3) Press and hold the UP or DOWN button to move the shade to the new desired position.
- 4) To confirm the new limit press and hold the MY button until the shade jogs.

DOWN LIMIT

- 1) Press the DOWN button to move the shade to the limit to be readjusted.
- 2) Press and hold the UP and DOWN buttons simultaneously until the shade jogs.
- 3) Press and hold the UP or DOWN button to move the shade to the new desired position.
- 4) To confirm the new limit press and hold the MY button until the shade jogs.

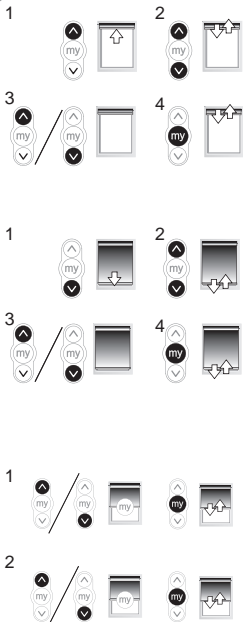
7.2 Favorite position : MY position

1) Changing the MY position

To change the MY position go to the new desired MY position with the UP and DOWN buttons then press the MY button until the shade jogs.

2) Deleting the MY position

Press the MY button to move to this position
To delete the MY position, move to this position and press the MY button until the shade jogs.



7.3 Modifying the motor rotation direction

Move the shade away from the end limits.

- 1) Press the UP and DOWN buttons simultaneously until the shade jogs.
- 2) Press the MY button until the shade jogs to reverse the rotation direction.
- 3) Press the UP button to check the new rotation direction.

The motor rotation direction is reversed.



7.4 Modifying the wheel rotation direction

Move the shade away from the end limits.

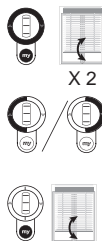
- 1) Press the UP and DOWN buttons simultaneously until the shade jogs.
- 2) Press the UP, MY and DOWN buttons simultaneously until the shade jogs to reverse the wheel rotation direction.

The wheel rotation direction is reversed.



7.5 Scroll wheel increment setting

- 1) Press the UP, MY and DOWN buttons simultaneously until the shade jogs twice.
- 2) Use the Up and Down buttons to readjust the scroll wheel movement. The result can be test in live with the scroll wheel.
- 3) To confirm the new setting, press the MY button until the shade jogs.



7.6 Replacement of a lost remote control

N.B.: This reset deletes all transmitters programmed, but end-limits, intermediate position and sensors are retained.

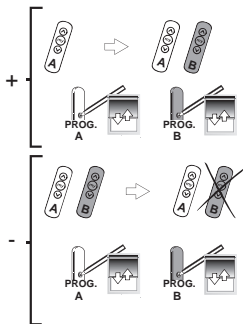
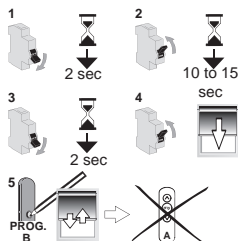
N.B.: Only switch off the current for the motor where a transmitter is lost.

- 1) Cut the power supply for 2 seconds.
- 2) Switch the power supply back on for 10 to 15 seconds.
- 3) Cut the power supply for 2 seconds.
- 4) Switch the power supply back on: the shade moves during 5 seconds (If the shade position is an end limit, the behavior of the shade will be a jog).
- 5) Press the RTS transmitter (B) PROG button until the shade jogs: all the RTS transmitters are cleared and the new RTS transmitter is programmed in the motor.

7.7 Adding/Deleting RTS transmitter

Find an RTS transmitter programmed in the motor.

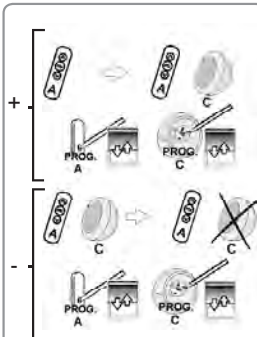
Press and hold the RTS programmed transmitter (A) PROG button until the shade jogs: the motor is in programming mode. Press briefly the RTS transmitter (B) PROG button to add or delete this transmitter: the shade jogs and the RTS transmitter is programmed or deleted from the motor.



7.8 Adding/Deleting RTS sensors

Find an RTS transmitter programmed in the motor.

Press and hold the RTS programmed transmitter (A) PROG button until the shade jogs: the motor is in programming mode. Press briefly the RTS sensor (C) PROG button to add or delete this sensor: the shade jogs and the RTS sensor is programmed or deleted from the motor.



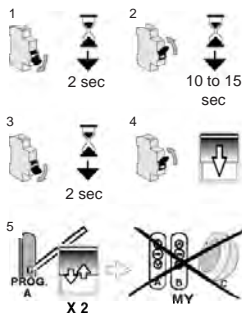
7.9 Erase the memory of the motor.

N.B.: This reset deletes all RTS transmitters, RTS sensors, end-limits and intermediate position programmed.

N.B.: Only switch off the current for the motor to be reset!

N.B.: Before cutting the power, move the shade to the middle position.

- 1) Cut the power supply for 2 seconds.
- 2) Switch the power supply back on for 10 to 15 seconds.
- 3) Cut the power supply for 2 seconds.
- 4) Switch the power supply back on: the shade moves during 5 seconds (If the shade position is an end limit, the behavior of the shade will be a jog).
- 5) Press the RTS transmitter (A) PROG button until the shade jogs twice: all the RTS transmitters, RTS sensors, end-limits and intermediate position are cleared.



8 Troubleshooting

The motor doesn't work:

Verify:

- The wiring of the motor.
- The power supply specifications.
- The compatibility of the control
- The heat generated (wait for the cooling of the motor).

The equipment stops too soon:

Verify:

- The operation of end-limits during the rotation of the motor.
- The crown is properly fitted to the tube.
- The end-limits of the motor are properly adjusted.
- That the shade is within the recommended weight limit.

The equipment is noisy:

Verify that:

- The wheel and the crown are well adapted to the used tube.
- The mechanical plays between motor, accessories, tube and end of tube must be decreased to the maximum.
- The wheel is properly fixed to the tube.
- The equipment is not constrained between the brackets.
- The length of the notch is adapted to the motor hook or to the used crown.
- Debris, screws or other are not in your tube.
- The power supply specifications.
- The temperature of the environment is in conformity with the operating temperature.

9 Technical data

Power supply	230V/50Hz - 120V/60Hz - 220V/60Hz
Frequency	433,42MHz
Operating temperature	0°C / 60 °C
Protection rating	IP44
Maximum number of transmitters	12
Maximum number of sensors	3

10 Environment



Damaged electric products and batteries should not be disposed of with normal household waste.

Make sure to drop them in specially provided containers or at an authorized organization that will ensure they are recycled