

## **Somfy RTS Motor Programming Instructions**

*Motor Programming Instructions have been rewritten by <https://www.AVOutlet.com>*

We rewrite the Somfy instructions in an effort to make things a little easier to follow. There are however some subtle differences in the motors. Please refer to the included Somfy motor specific instructions if something is not working. Feel free to let us know if something is found to be incorrect.

### **Please Read and Follow These Instructions.**

**Please use the motor programming instructions provided here. The remote control instructions can be used for reference but they are not as easy to follow. A copy of the Somfy instructions are also provided for your reference.**

Please read installation instructions and programming instructions completely prior to proceeding with installation and programming. Failure to do so can result in damage to the motor and or the shade.

Be prepared to stop the shade during programming. The programming step where you set the first stop limit (upper or lower whichever you do first) will activate the motor to move without stopping on its own. You will need to stop the motor at the next stop limit using the remote as indicated. Failure to stop the shade can result in shade or motor damage.

The motors **MUST** be installed in the tube and the assembly must be mounted into brackets to be able to program the motor.

Only apply power to the motor being programmed regardless if the other motors have been programmed or not. This will prevent inadvertent interaction with other motors. This is not possible for motors with built-in batteries like the R28WF, ST30WF etc. Motors with built-in batteries must be put to sleep.

We recommend mapping out the installation before proceeding. This will reduce set-up time and make life easier. Decide the channels and or additional remotes to be assigned to each shade in the installation. Each shade should be completely programmed before moving to the next. Have the necessary remotes and controls ready prior to proceeding.

All motors programmed to the same RTS channel will operate at the same time. If you want individual control of the motor, you must use separate channels on multi-channel remotes or separate single channel remotes

The remote controls are generally considered to be dummy devices as they do not store any motor or programming information. The motors are the intelligent devices. The motors store the shade operation limits in their memory and the motors also memorize the specific remotes or channels assigned to control them. Each motor can have up to 12 remotes or channels controlling them.

**Note:** The Telis 4 Remote Control is a 5 Channel Remote control. The 5<sup>th</sup> channel is all lights on. The 5<sup>th</sup> channel by default is not a group channel. This channel is not automatically assigned and must be programmed.

**Please read the previous page before proceeding.**

**Step 1 - Assign a RTS Channel to the Motor**

1-A) Select the RTS remote control and channel you want to use.

1-B) Press and Hold both the **UP** and **DOWN** buttons simultaneously until the motor jogs, then release. A jog is a movement in both directions.

If the motor does not respond, proceed to the “Resetting and Clearing the Motor Memory” Page(s) and reset the motor. If working with a built-in battery motor like the ST30WF you might need to wake the motor first.

**Step 2 - Check Motor Direction and Change if Necessary – DO NOT SKIP**

2-A) Check the direction of operation (the motor will operate in momentary fashion). Confirm that the UP button brings the shade UP and DOWN brings the shade DOWN.

2-B) **Changing the direction (If needed)**, Press and Hold the **STOP/MY** button until the motor jogs, then release. A jog is a movement in both directions. Re-Check the direction.

**Step 3 - Set Lower and Upper Shade Limits**

3-A) Move the shade to the desired lower limit position using the remote control. The shade will only move when the button is being pressed.

3-B) Press and Hold both the **STOP/MY** and **UP** buttons simultaneously until the motor begins to move up, then release. Be prepared to stop the shade manually using the **STOP/MY** button. Stop the shade and adjust to your desired upper limit position.

3-C) Press and Hold both the **STOP/MY** and **DOWN** buttons simultaneously until the motor begins to move Down, then release. The shade will move down to the already set lower limit position and will stop on its own.

**Step 4 - Store the Limits in the Motor Memory**

4-A) Press and Hold the **STOP/MY** button until the motor jogs. A jog is a movement in both directions. The limits are now recorded. The shade will NOT move automatically to a limit with one button press yet!! Perform the next step.

**Step 5 - Exit and Save Initial Programming**

5-A) Briefly Press and Release the program button on the remote control. The motor will jog once. A jog is a movement in both directions. The program button is typically on the backside of a hand-held remote control or front of a wireless wall switch. A paperclip will be needed to press the program button.

The shade should now move to the open and closed positions with a momentary press of the buttons.

The optional steps on the next page should be reviewed. You should program the MY position now as well as program additional channels of control if needed before moving on to another motor.

## **Optional Programming Tasks**

These procedures can be done at any time after initial programming, but we do recommend performing all desired additional tasks before moving onto the next shade. All shades not being programmed should have the power disconnected be put to sleep.

### **Set the Customer Preferred MY Intermediate Position**

- 1) Using the remote, position the shade to the location you would like as your intermediate customer preferred position
- 2) Press and Hold the **STOP/MY** button until the motor jogs, then release. A jog is a movement in both directions.

**Note:** Simply repeat this step if you want to change the intermediate position to a new position even if one has already been programmed.

### **Add a Remote or Channel to Control the Same Shade (If Desired)**

- 1) To **ADD** another remote control or another RTS channel to the motor memory, Press and Hold the program button on the previously recorded remote control until the motor jogs. A jog is a movement in both directions.
- 2) Select the new remote or RTS channel to add to the motor memory. Briefly Press and Release the program button on the remote control. The motor will jog once. A jog is a movement in both directions.

**Note:** Some the older style motors require a Press and Hold of the program button for both steps. Please refer to the included motor specific instructions if you are having difficulties.

### **Delete a Remote or Channel from the Motor Memory**

- 1) To **DELETE** a remote control or channel, Press and Hold the program button of a previously recorded channel or remote until the motor jogs. A jog is a movement in both directions. (This remote or channel is the one to keep)
- 2) Select the remote or channel to delete. Briefly Press and Release the program button on the remote control. The motor will jog once. A jog is a movement in both directions.

**Note:** Some the older style motors require a Press and Hold of the program button for both steps. Please refer to the included motor specific instructions if you are having difficulties.

### **Adjusting the Lower Limit**

- 1) Move the shade to its current lower limit position and let it stop.
- 2) Press and Hold the **UP** and **DOWN** buttons simultaneously and until the motor jogs, then release. A jog is a movement in both directions.
- 3) Adjust to a new lower limit position. Press and Hold the **STOP/MY** button until the motor jogs, then release. A jog is a movement in both directions.

### **Adjusting the Upper Limit**

- 1) Move the shade to its current upper limit position and let it stop.
- 2) Press and Hold the **UP** and **DOWN** buttons simultaneously until the motor jogs, then release. A jog is a movement in both directions.
- 3) Adjust to a new upper limit position. Press and Hold the **STOP/MY** button until the motor jogs, then release. A jog is a movement in both directions.

## **Resetting and Clearing the Motor Memory**

This procedure works for all motors except the ST40 120VAC and ST50 120VAC Motors. The caveats of each motor are listed separately.

A paperclip will be needed to press the program button on some motors. These program buttons do not need to be pressed hard. If you are having difficulty pressing the button, please use a larger diameter paperclip.

Press and Hold the program button on the motor until the shade jogs 3 times while continuously pressing the button. One jog is a movement in both directions. There will be a pause between jogs so please be patient.

### **RU28 12VDC, R28WF Battery & ST30WF Battery RTS Motors**

Same as above. The program button is rectangular and found on the motor head.

### **R28 12VDC RTS Motor (Older Version)**

Same as above. The program button is in a hole on the motor head.

The reset procedure on older versions of the R28 motor only works if the motor has been completely programmed. Remove power for a minimum of 2 minutes if the motor is not resetting.

### **LT30 12VDC RTS Motor**

Same as above. The program button is in a hole on the motor head.

Some older versions of this motor do not jog. Hold the program button until the LED next to the power connection stops blinking which is typically around 12 seconds.

### **ST30 RTS Motor (24VDC Version)**

Same as above. The Sonesse 30 has two holes with recessed buttons. The white hole has the program button and the yellow is for manually activating the shade to move.

### **RU24WF, ST30UWF & ST40WF RTS Battery RTS Motors**

Same as above. The program button is in a hole on the motor head.

### **ST40 120VAC & ST50 120VAC Motor Resetting and Clearing**

This reset procedure is sometime finicky. Several attempts may be required.

1) Disconnect power for 2 seconds.

2) Connect power for 5 seconds.

**Note:** Somfy recommends 10-15 seconds but we found 5 seconds to work better.

3) Disconnect power for 2 Seconds

4) Connect power and then leave it on. The motor will rotate in one direction if the shade is between limits or will jog if at one of the programmed stops.

5) Press and Hold the programming button (App. 10 sec) on any RTS remote until the shade jogs twice. There will be a pause between the jogs. Do not release the program button until the second jog is complete. (The remote used does not have to be the one already programmed to the shade) The motor is now ready for programming from the beginning.

## **Built-in Battery Motor – Sleeping and Waking**

### **Sleep – Temporary (App. 15 Minutes)**

Press and Hold the program button on the motor head until the shade jogs once. A jog is a movement in both directions.

Press and Release the program button. The shade will jog twice. A jog is a movement in both directions.

### **Sleep – Until Wake (Motor must be programmed prior)**

Press and Hold the program button on the motor head or remote control until the shade jogs once. A jog is a movement in both directions.

Press and Hold all three buttons Up, Stop/My/Down on the remote control until the shade jogs once. A jog is a movement in both directions.

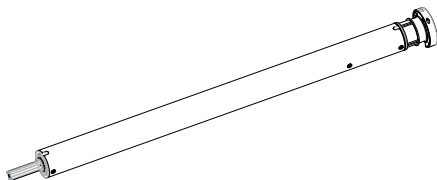
### **Wake**

Press and Release the program button on the motor head until the shade jogs once or plug in a charger. A jog is a movement in both directions.

**Intentionally blank**



DESIGNED FOR  
SILENCE



# Sonesse 30 RTS

**EN**

Instructions

**somfy®**





# ORIGINAL INSTRUCTIONS

These instructions apply to all Sonesse 30 RTS drives, the different versions of which are available in the current catalogue.

## CONTENTS

<b>1. Prior information.....</b>	<b>5</b>
1.1. Field of application.....	5
1.2. Liability .....	5
<b>2. Installation.....</b>	<b>6</b>
2.1. Assembly .....	6
2.2. Compatible power supplies (for US only) .....	8
2.3. Wiring .....	9
2.4. Commissioning .....	10
2.5. Tips and advice on installation.....	12
<b>3. Use and maintenance .....</b>	<b>18</b>
3.1. Mode selection: Roller or Tilting Mode .....	18
3.2. Controlling Up, Down, My: in Roller mode .....	19
3.3. Controlling Up, Down, My: in Tilting mode.....	19
3.4. Favourite position (my) .....	20
3.5. Sun disappearing position .....	21
3.6. Sun function.....	22
3.7. Adjusting the speed .....	23
3.8. Tips and advice on operation .....	24
<b>4. Technical data .....</b>	<b>26</b>

---

## GENERAL INFORMATION

---

### Safety instructions



#### **DANGER**

*Indicates a danger which may result in immediate death or serious injury.*



#### **WARNING**

*Indicates a danger which may result in death or serious injury.*



#### **PRECAUTION**

*Indicates a danger which may result in minor or moderate injury.*



#### **CAUTION**

*Indicates a danger which may result in damage to or destruction of the product.*

# 1. PRIOR INFORMATION

---

## 1.1. Field of application

The Sonesse 30/24 drives are designed to drive all types of interior blinds and projection screens up to 2 Nm except pantographs.

The installer, who must be a motorisation and home automation professional, must ensure that the motorised product is installed in accordance with the standards in force in the country in which it is installed such as EN 13120 relating to interior blinds.

## 1.2. Liability

Before installing and using the drive, please read **these instructions carefully**.

In addition to the instructions provided in this guide, please also comply with the instructions provided in the attached **Safety instructions** document.

**The drive must be installed by a home motorisation and automation professional, in accordance with Somfy's instructions and the applicable regulations in the country of installation.**

Any operation of the drive outside the field of application described above is prohibited. Such use, and any failure to comply with the instructions given in this guide and in the attached **Safety instructions** document, absolves Somfy of any liability and invalidates the warranty.

After installing the drive, the installer must inform his customers of the operating and maintenance conditions for the drive and must provide them with the operating and maintenance instructions, and the attached **Safety instructions** document. Any After-Sales Service operation on the drive must be performed by a home motorisation and automation professional.

Never begin installing without first checking the compatibility of this product with the associated equipment and accessories. If in doubt when installing this product and/or to obtain additional information, contact a Somfy representative or visit the website **[www.somfy.com](http://www.somfy.com)**.

## 2.INSTALLATION



### WARNING

- These instructions are mandatory for the home motorisation and automation professional installing the drive.
- Comply with current standards and legislation in the country of installation.



### CAUTION

- Never drop, knock or puncture the drive or immerse it in liquid.
- Install an individual control point for each drive.
- To insure optimized silent operation, the gaps between the drive, the accessories, the tube and the tube end piece must be minimized.
- Never cut or remove the cable label.

## 2.1.Assembly

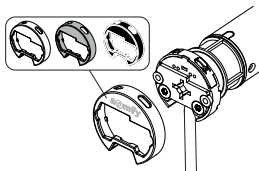
### 2.1.1.Replace the head cover with a different color (Optional)



#### NOTICE

Head has interchangeable covers to fit with the fabric.

- 1] Unclip the cover.
- 2] Clip the new cover on the head.



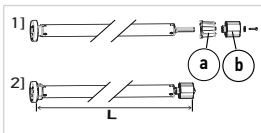
### 2.1.2.Preparing the drive



### CAUTION

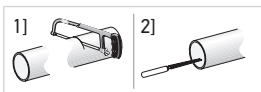
- Sonesse 30 RTS : interior diameter of the tube has to be Ø27.7 mm or greater.
- The crown is mandatory.

- 1] Fit the accessories required to integrate the drive into the tube:
  - ⇒ Fit the crown (a) and the wheel (b) to the drive.
- 2] Measure the length (L) between the inner edge of the drive head and the rim of the wheel.



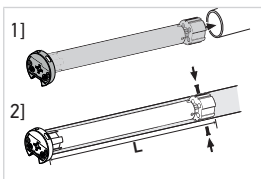
### 2.1.3. Preparing the tube

- 1] Cut the tube to the required length.
- 2] Deburr the tube and remove the debris.



### 2.1.4. Assembling the drive-tube

- 1] Slide the drive into the tube. For tubes with a smooth interior, position the cut notch on the crown.
- 2] The wheel must be locked in place to prevent any movement in the tube.



- This can be achieved by fastening the tube to the wheel using self-tapping screws, or steel pop rivets, placed between 5 mm and 15 mm from the outer edge of the wheel, regardless of the tube.
- or by using a wheel lock, for non-smooth tubes.



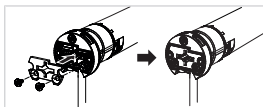
#### CAUTION

*The screws or pop rivets must only be fastened on the wheel and not on the drive.*

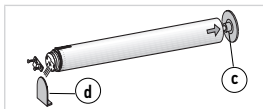
## 2.1.5. Installing the drive-tube assembly

### CAUTION

- *The motorised product must not be compressed between the brackets.*
  - *Do not use the plastic cross without the metal bracket adapter.*
- The drive can be fixed directly onto the drive bracket (the screw holes are spaced 29 mm apart). Use 2 screws (3.5 x 9 mm). A manual tightening torque of 1.5 N m is recommended.
  - Or the drive can be fixed with an integrated drive plate (check in the catalogue to find the reference which fits perfectly with your bracket). Use the 2 screws (3 x 6 mm) delivered with the motor plate. A manual tightening torque of 0,9 N m is recommended. This solution improves the light gap.



- 1] Screw the bracket adapter to the drive head.
- 2] Install and fix the drive-tube assembly onto the end bracket (c) and onto the drive bracket (d).



### CAUTION

- *Ensure that the drive-tube assembly is secured onto the end bracket. This operation prevents the tube-drive assembly from coming out of the end bracket attachment.*
- *Light gap reduced: Do not pinch cable or be careful they are not in contact with moving parts.*

## 2.2. Compatible power supplies (for US only)

References	Designations
1870196	5 motors / Control Distribution panel
1870192	10 motors / Control Distribution panel

References	Designations
1870197	15 motors / Control Distribution panel
1870198	20 motors / Control Distribution panel
1870259	Somfy Power Panel

## 2.3.Wiring



### WARNING

*To ensure electrical safety, this Class III drive must be powered by a «SELV» voltage source (Safety Extra Low Voltage).*



### PRECAUTION

- *Cables routed through a metal wall must be protected and insulated by sleeving or sheathing.*
- *Secure the cables to prevent any contact with moving parts.*
- *If the drive is used outdoors and if the power supply cable is of the H05-VVF type, run the cable in a UV-resistant duct, e.g. trunking.*
- *The drive cable cannot be removed. If it is damaged, return the drive to the After-Sales department.*



### CAUTION

- *Leave the drive power supply cable accessible: the product must be easily replaceable.*
- *Always make a loop in the power supply cable to prevent water from entering the drive.*



### CAUTION

- *The product is intended for being supplied by Class II output of an external power supply.*
- *Do not use an extension cord. If the power supply cord is too short, have a qualified electrician install an outlet near the motorised product.*

Connect the drive to the power supply:

- Black wire: -
- Red wire: +

## 2.4.Commissioning

### NOTICE

- Orange LED blinks continuously in setting mode.
- Green LED blinks once when any order from paired remote is received.

### 2.4.1.Pre-programming the control point

Press the **Up** and **Down** buttons simultaneously on the control point:

→The motorised product moves up and down, green LED blinks 5 times and the control point is temporarily programmed.



### 2.4.2.Checking the direction of rotation

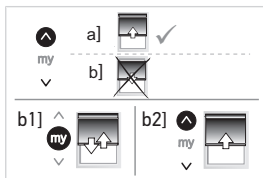
Press the **Up** button on the control point:

**a]** If the motorised product rises, the direction of rotation is correct: move onto **Setting the end limits** [► 10]

**b]** If the motorised product lowers, the direction of rotation is incorrect: move onto the next step.

**b1]** Press the **My** button on the control point until the motorised product moves up and down: The direction of rotation has been modified and green LED blinks 5 times.

**b2]** Press the **Up** button on the control point to confirm the direction of rotation.



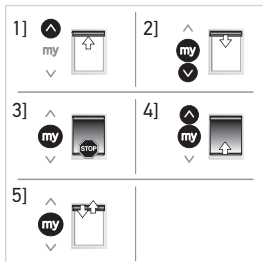
### 2.4.3.Setting the end limits

### NOTICE

*The end limits can be set in any order.*



- 1] Press and hold the **Up** button to move the motorised product to the desired up position. If necessary, adjust the up position using the **Up** or **Down** buttons.
- 2] **To memorize the up limit:** Press the **My** and **Down** buttons simultaneously and release once the motorised product begins to move. The up limit is now memorized and green LED blinks 5 times.
- 3] Press the **My** button when the motorised product reaches the desired down position. If necessary, adjust the down position using the **Up** or **Down** buttons.
- 4] **To memorize the down limit:** Press the **My** and **Up** buttons simultaneously and release when the motorised product begins to move and green LED blinks 5 times. The down limit is now memorized. The motorised product moves up and will stop at its upper limit.
- 5] **To confirm and complete limit programming:** Press and hold the **My** button until the motorised product briefly moves up and down and green LED blinks 5 times. The end limits are now recorded.



## 2.4.4. Recording "Pairing" the control point

After recording the end limits:

Briefly press the control point **Prog.** button.

→ The motorised product briefly moves up and down to confirm pairing.

The control point is recorded "paired" to the motorised product and green LED blinks 5 times.



## 2.5. Tips and advice on installation

### 2.5.1. Questions about the product?

Observations	Possible causes	Solutions
The motorised product is noisy.	The wheel and the crown are not adapted to the used tube.	Change the wheel and the crown.
	The mechanical plays between drive, accessories, tube and end of tube are too high.	The mechanical plays between drive, accessories, tube and end of tube must be decreased to the minimum.
	The wheel is not properly fixed to the tube.	Fix the wheel properly to the tube.
	The equipment is constrained between the brackets.	Decrease the constraint between the brackets.
	The length of the notch is not adapted to the drive hook or to the used crown.	Adapt the length of the notch to the drive hook or to the used crown.
	Debris, screws or other are in the tube.	Empty the tube.
	The temperature of the environment is not in conformity with the operating temperature.	Change the environment temperature.
The motorised product stops too soon or too late.	The end limits of the motorised product slip.	Re-set the end limits referring to <b>Readjusting the end limits ► 14</b>
	End-limits are not properly adjusted.	Adjust the end-limit referring to <b>Readjusting the end limits ► 14</b>

Observations	Possible causes	Solutions
The motorised product does not work.	The motorised product does not fall within the recommended weight limits.	Check the compatibility of the motorised product. Consult a Somfy contact or visit <b>www.somfy.com</b> .
	Wiring is incorrect.	Check the wiring and modify it if necessary.
	The drive is neither set nor paired. Orange LED lights fixed on.	Proceed to <b><u>Commissioning</u></b> [► 10]
	The drive is in setting mode. Orange LED blinks.	Proceed to <b><u>Setting the end limits</u></b> [► 10]. And then proceed to <b><u>Recording "Pairing" the control point</u></b> [► 11]
	The drive is in thermal protection mode. LED Red = ON then lights OFF.	Wait for the drive to cool down.
	An obstacle hinders the movement of the motorised product. The Red LED lights fixed on.	Remove the obstacle.
	Drive position is out of the end limits. Red LED blinks 2 times intermittently and continually.	Proceed to <b><u>Setting the end limits</u></b> [► 10]
	The control point battery is low. LED doesn't light when any button of a paired control point is pressed.	Check the battery of the control point and replace it as required.

Observations	Possible causes	Solutions
	The control point is not compatible or not programmed. LED doesn't light when any button of the control point is pressed.	Check the compatibility or pair the control point as required referring to <b><u>Adding/Deleting Somfy control points</u></b> [► 25]

## 2.5.2. Readjusting the end limits

### ⚠ CAUTION

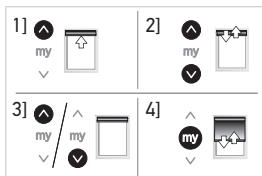
*Control point must be paired to the motorised product.*

### i NOTICE

*Orange LED blinks slowly until the new end limit is recorded.*

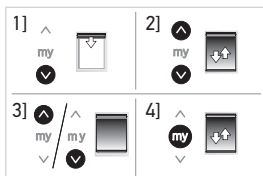
### 2.5.2.1. Readjusting the upper end limit

- 1] Briefly press the **Up** button, to move the motorised product to the upper end limit.
- 2] Press and hold the **Up** and **Down** buttons simultaneously until the motorised product briefly moves Up and Down.
- 3] Press and hold the **Up** or **Down** button to move the motorised product to the new desired position.
- 4] To confirm the new position press and hold the **My** button until the motorised product briefly moves up and down and green LED blinks 5 times.



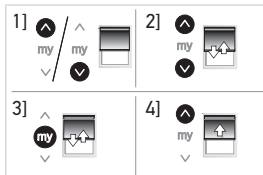
### 2.5.2.2. Readjusting the lower end limit

- 1] Briefly press the **Down** button to move the motorised product to the lower end limit.
- 2] Press and hold the **Up** and **Down** buttons simultaneously until the motorised product briefly moves up and down.
- 3] Press and hold the **Up** or **Down** button to move the motorised product to the new desired position.
- 4] To confirm the new position press and hold the **My** button until the motorised product moves up and down and green LED blinks 5 times.



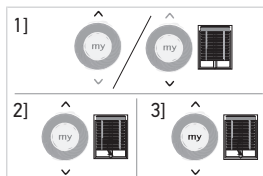
### 2.5.3. Modifying the drive rotation direction

- 1] Using the **Up** or **Down** button on the control point, move the motorised product away from the end limits.
- 2] Press and hold the **Up** and **Down** buttons simultaneously until the motorised product briefly moves up and down and orange LED starts to blink slowly.
- 3] Press the **My** button until the motorised product briefly moves up and down to reverse the rotation direction and green LED blinks 5 times.
- 4] Press the **Up** button to check the new rotation direction. The drive rotation direction is reversed.



## 2.5.4. Modifying the wheel rotation direction

- 1] Using the **Up** or **Down** button on the control point, move the motorised product away from the end limits.
- 2] Press and hold the **Up** and **Down** buttons simultaneously until the motorised product briefly moves up and down and orange LED starts to blink slowly.
- 3] Press the **Up**, **My** and **Down** buttons simultaneously, until the motorised product briefly moves up and down, wheel rotation is reversed and green LED blinks 5 times.



## 2.5.5. Erasing control points from memory

To delete all the programmed control points, press and hold the drive head programming button until the motorised product briefly moves up and down **twice**.

→ All programmed control points are deleted and green LED blinks 5 times.



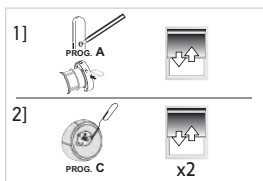
## 2.5.6. Erasing sensors from memory

- 1] To delete all the programmed sensors, press and hold the **Prog.** button (A) on the programmed control point or the drive head programming button until the motorised product briefly moves up and down.

⇒ Green LED blinks 5 times then orange LED blinks slowly.

- 2] Press and hold the **Prog.** button (C) on the RTS sensor until the motorised product briefly moves up and down **twice**.

→ All programmed sensors are deleted and green LED blinks 5 times.



## 2.5.7. Erasing the memory of the drive (factory default)

To reset the drive, press and hold the drive head programming button until the motorised product briefly moves up and down **3 times**.

→ All the settings are erased. Green LED blinks 5 times then orange LED is fixed on.



## 2.5.8. Temporary sleeping mode



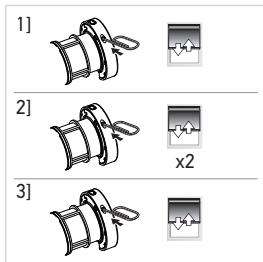
**CAUTION**

*The motorised product must be programmed.*

**NOTICE**

*The drive will not respond to any control points commands for 15 minutes*

- 1] Press and hold the drive head programming button until the motorised product briefly moves up and down.
- 2] Briefly press the drive head programming button, the motorised product briefly moves up and down twice.  
→ "Sleeping mode" is activated, green LED blinks 5 times to confirm, then orange LED blinks every second as long as the drive is in the temporary sleeping mode.
- 3] To deactivate the "Sleeping mode", briefly press the drive head programming button.  
→ The motorised product briefly moves up and down, the control point commands are enabled. Green LED blinks 5 times.



## 3. USE AND MAINTENANCE

**NOTICE**

*This drive does not require any maintenance operations.*

### 3.1. Mode selection: Roller or Tilting Mode

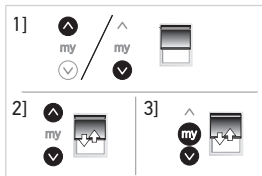
The drives are designed to work in 2 modes: Tilting mode or Roller mode. This feature allows the drive to be set according to the type of application.

**NOTICE**

*The drive is set (by default) to work in Roller mode.*

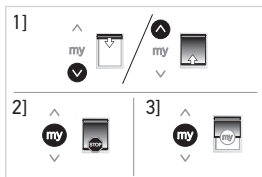


- 1] Move the motorised product away from the end limits.
  - 2] Simultaneously press and hold the **Up** and **Down** buttons until the motorised product briefly moves up and down.
  - 3] Press and hold the **My** and **Down** buttons simultaneously until the motorised product briefly moves up and down to change from Roller mode to Tilting mode.
- Green LED blinks twice to indicate that the drive is in **Roller mode** or three times to indicate that the motor is in **Tilting mode**.



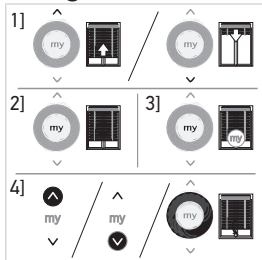
## 3.2. Controlling Up, Down, My: in Roller mode

- 1] To move the motorised product from a limit to the other limit, briefly press the **Up** or **Down** button.
- 2] To stop the motorised product, briefly press the **My** button.
- 3] (If a My position is recorded) To move the motorised product to the My position, briefly press the **My** button.



## 3.3. Controlling Up, Down, My: in Tilting mode

- 1] To move the motorised product from a limit to the other limit, briefly press (less than 0,5s) the **Up** or **Down** button.
- 2] To stop the motorised product, press the **My** button.
- 3] (If a My position is recorded) To move the motorised product to the My position, briefly press the **My** button. The



motorised product automatically travels to the down end limit (first) then to the My position.

- 4] To tilt the slats, press and hold the **Up** or **Down** button or use the scroll of the remote control, until the slats reach the desired position.

## 3.4.Favourite position (my)

### ① NOTICE

*An intermediate position, which is called the "favourite (my) position" and is different from the upper and lower positions, can be programmed.*

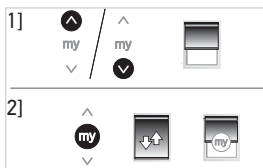
### 3.4.1.Programming or modifying the favourite (my) position

#### ① NOTICE

*Only one favourite (my) position is permitted.*

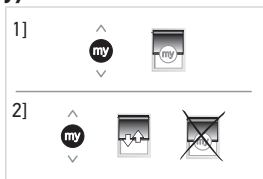
- 1] Place the motorised product in the desired favourite position (my).
- 2] Press and hold the **my** button until the motorised product briefly moves up and down:

→ The desired favourite position (my) is programmed and green LED blinks 5 times.



### 3.4.2.Deleting the favourite position (my)

- 1] Press the **my** button:  
⇒ The motorised product starts to move and stops in the favourite position (my).
- 2] Press and hold the **my** button until the motorised product briefly moves up and down:



- The favourite position (my) is deleted and green LED blinks 5 times.

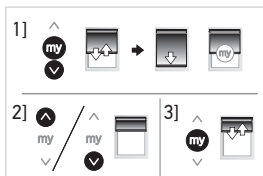
## 3.5.Sun disappearing position

### ① NOTICE

*This function is available only if a favourite (my) position is programmed.*

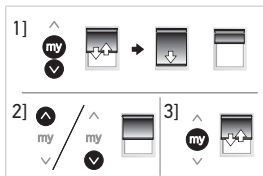
### 3.5.1.Setting the sun disappearing position

- 1] Press and hold the **My** and **Down** buttons until the motorised product moves.
  - ⇒ The motorised product moves to the lower end limit and returns to the My position.
- 2] Move the motorised product to the desired sun disappearing position using the **Up** and **Down** buttons.
- 3] Press and hold the **My** button until the motorised product moves up and down.
  - The sun disappearing position is set.



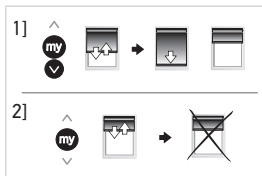
### 3.5.2.Modifying the sun disappearing position

- 1] Press and hold the **My** and **Down** buttons until the motorised product moves.
  - ⇒ The motorised product moves to the lower end limit and returns to the sun disappearing position.
- 2] Move the motorised product to the NEW desired sun disappearing position using the **Up** and **Down** buttons.
- 3] Press and hold the **My** button until the motorised product moves up and down.
  - The new sun disappearing position is programmed.



### 3.5.3. Deleting the sun disappearing position

- 1] Press and hold the **My** and **Down** buttons until the motorised product moves.  
 ⇒ The motorised product moves to the lower end limit and returns to the sun disappearing position.
- 2] Press and hold the **My** button until the motorised product moves up and down.  
 → The sun disappearing position is deleted.



## 3.6. Sun function

### **NOTICE**

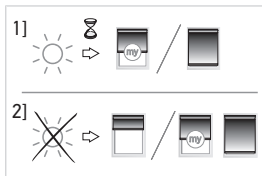
*This function is available only with a control point that can activate/deactivate the sun protection automatisms.*

By default, the sun function is not active.

#### **To activate/deactivate the Sun function:**

Refer to the corresponding control point instructions.

- 1] When the sunlight level exceeds the threshold set on the sun sensor:  
 ⇒ A Down order is sent to the motorised product after 2 min.  
 ⇒ The motorised product moves to the My position or to its lower end limit if no MY position has been memorized.
- 2] When the sunlight level falls below the threshold set on the sun sensor:



- ⇒ The motorised product moves to the sun disappearing position or stays at its position (My or lower end limit) if no sun disappearing position has been memorized.

**NOTICE**

*The Wind function is not compatible with this drive.*

## 3.7. Adjusting the speed

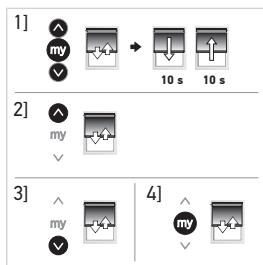
**NOTICE**

*Orange LED blinks slowly in this mode.*

- 1] Move the motorised product away from the end limits. Press and hold the **Up**, **My** and **Down** buttons simultaneously, until the motorised product briefly moves up and down once.

- ⇒ The motorised product moves up and down automatically between limits to validate entering in speed adjustment mode.

- 2] To increase the speed, press and hold the **Up** button until the motorised product briefly moves up and down and green LED blinks 5 times. Repeat as needed.



**NOTICE**

*Maximum speed is reached when the motorised product moves briefly 3 times in one direction and 3 times in the other direction. Red LED blinks 3 times and 3 times intermittently.*

- 3] To decrease the speed, press and hold the **Down** button until the motorised product briefly moves up and down. Repeat as needed.

#### ① NOTICE

*Minimum speed is reached when the motorised product moves briefly 3 times in one direction and 3 times in the other direction. Red LED blinks 3 times and 3 times intermittently.*

- 4] To confirm the new speed, press and hold the **My** button until the motorised product briefly moves up and down and green LED blinks 5 times.

## 3.8. Tips and advice on operation

### 3.8.1. Questions about the product?

Observations	Possible causes	Solutions
The motorised product does not operate.	The control point battery is low.	Change control point battery as required.
	Thermal protection of the drive is on.	Wait for the drive to cool down.
The motorised product does not react when the sun appears/disappears.	The sun function is not activated on the remote control.	Activate the sun function on the remote control referring to <b><u>Sun function</u></b> [► 22].
	The sun disappearing position is not set.	Set the sun disappearing position referring to <b><u>Sun disappearing position</u></b> [► 21].

#### ① NOTICE

*If the motorised product still does not work, contact a drive and home automation professional.*

### 3.8.2. Adding/Deleting Somfy control points

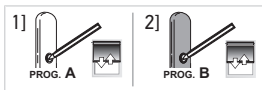
#### ① NOTICE

*Orange LED blinks slowly when adding or deleting a remote control.*



#### 3.8.2.1. Using a control point already programmed to the motorised product

- 1] Press and hold the **Prog.** button (A) on the programmed control point until the motorised product briefly moves up and down.



⇒ Green LED blinks 5 times then orange LED blinks slowly.

- 2] Briefly press the **Prog.** button (B) on the control point to add or delete.

→ Green LED blinks 5 times.

#### 3.8.2.2. Using the Programming button on the drive head

- 1] Press and hold the drive head programming button until the motorised product briefly moves up and down.



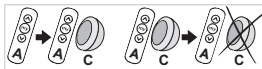
- 2] Briefly press the **Prog.** button (B) on the control point to add or delete.

→ Green LED blinks 5 times.

### 3.8.3. Adding/Deleting RTS sensors

#### ① NOTICE

*Orange LED blinks slowly when adding or deleting an RTS sensor.*



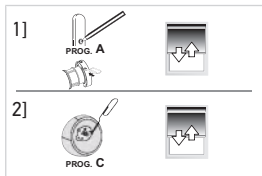
- 1] Press and hold the **Prog.** button (A) on the programmed control point or the drive head programming button until the motorised product briefly moves up and down.

⇒ Green LED blinks 5 times then orange LED blinks slowly.

- 2] Briefly press the **Prog.** button (C) on the RTS sensor to add or delete.

⇒ The motorised product briefly moves up and down.

⇒ Green LED blinks 5 times.



## 4. TECHNICAL DATA

Frequency bands and maximum power used	433.050 MHz - 434.790 MHz e.r.p. <10 mW
Power supply	24 V
Operating temperature	0°C - +60°C
Operating time	6 min
Input current	0.7 A
Index protection rating	IP30 (For indoor use only)
Safety level	Class III
Torque	2 N·m
Adjustable speed	6 - 28 rpm
Roller speed (by default)	25 rpm
Maximum number of associated controls	12



**NOTICE**

*For additional information on the technical data for this drive contact your Somfy representative.*



Please separate storage cells and batteries from other types of waste and recycle them via the local collection facility.



We care about our environment. Do not dispose of the appliance with usual household waste. Give it to an approved collection point for recycling.



SOMFY ACTIVITES SA, F-74300 CLUSES as manufacturer hereby declares that the drive covered by these instructions and used as intended according to these instructions is in compliance with the essential requirements of the applicable European Directives and in particular of the Machinery Directive 2006/42/EC, and the Radio Directive 2014/53/EU.

The full text of the EU declaration of conformity is available at [www.somfy.com/ce](http://www.somfy.com/ce).

Philippe Geoffroy, Approval manager, acting on behalf of Activity director, Cluses, 12/2020.

US Patents 6979962, 7852765, 7860481, patent pending.

## **SOMFY ACTIVITES SA**

50 avenue du Nouveau Monde

F-74300 CLUSES

**[www.somfy.com](http://www.somfy.com)**

**somfy®**



**5155873A**

