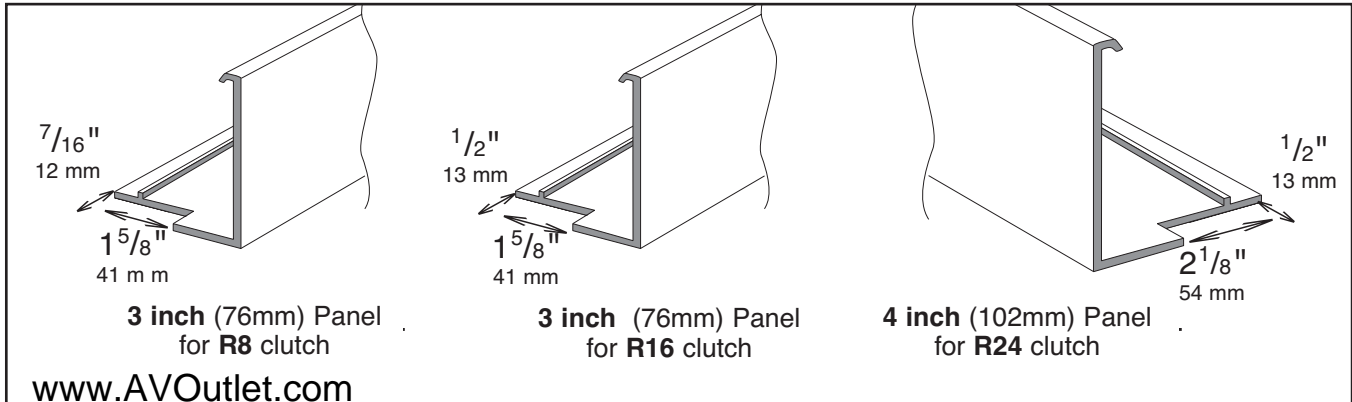


R-Series Fascia Fabrication - Installation

7. **CUT FASCIA PANEL TO DIMENSION "A"** as calculated in step 1, over.

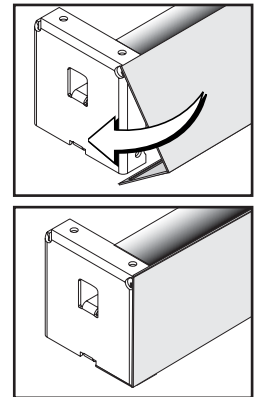
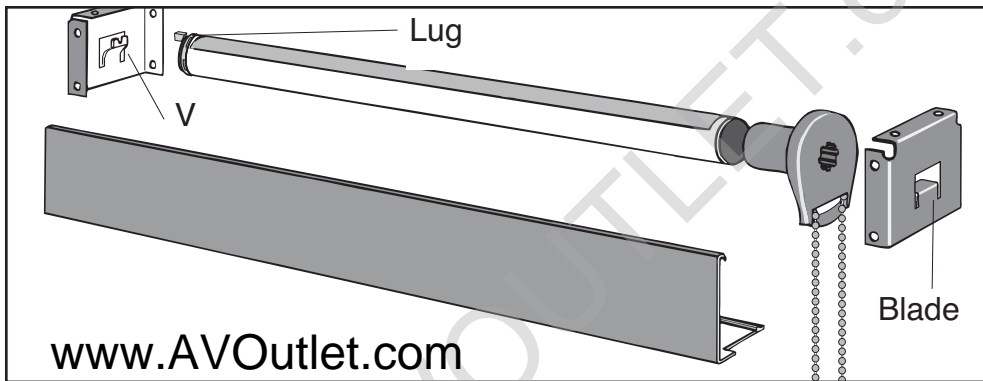
8. **CUT AN OPENING IN THE BOTTOM OF THE CLUTCH END OF THE FASCIA PANEL. DEBURR THE CUT EDGES.**

The clutch bottom and control cord will fit through this opening. The openings for the R8 and R16 clutches are shown for left-hand control. The opening for the R24 clutch is shown for right-hand control.



INSTALLATION

1. **MOUNT THE BRACKETS.** The open end of each bracket faces downward, as shown in the drawing below. **NOTE:** If you have an inside mount and must use inside mount holes, you will have to drill your own holes in the side of the bracket. Use at least two screws per bracket, and make sure that the screw heads clear the clutch.



2. **INSTALL THE SHADE.** Push the clutch straight onto the blade of its bracket. The bottom of the clutch should always point straight down, as shown above. Lower the lug of the end plug onto the V of its bracket. The roller should fit in the brackets securely, with just a little play.

ATTACH FASCIA PANEL Attach the fascia by first hooking the top lip of the fascia panel onto the bracket as shown. Swing the bottom the fascia panel towards the bracket and gently press at the bottom to the panel until the lip on the fascia engages and snaps locked to the bracket.

3. **ATTACH STOPS TO METAL OR PLASTIC BEAD CHAIN.** For plastic bead chain: use connector for top stop and attach another connector for lower stop. For metal bead chain: attach a metal stop ball at least 5/16 inch (8 mm) in diameter so that it touches the clutch when the shade is rolled all the way up. For both kinds of bead chain, lower the shade to sill or floor height, and snap the appropriate metal stop or plastic connector on the opposite side from the stop, so that the shade cannot be lowered beyond that point.

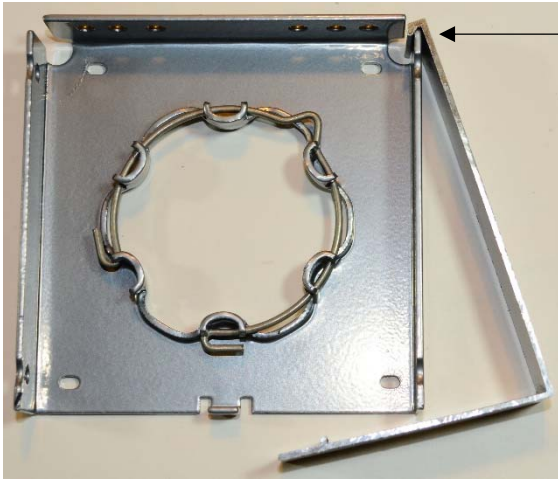
4. **INSTALL THE TENSION DEVICE:** See page Tension device assembly sheet for details



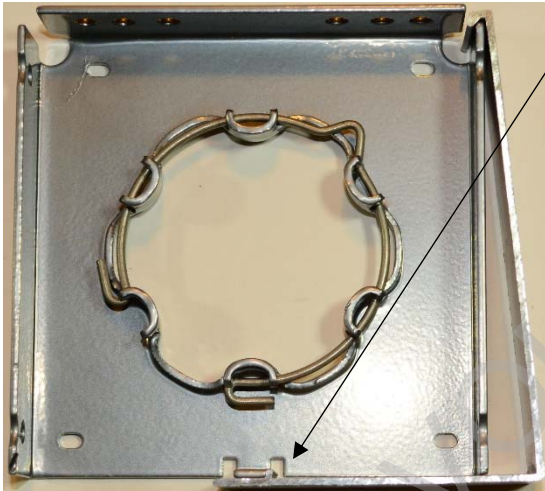
5. **USE THE CONTROL CORD OR BEAD CHAIN TO OPERATE THE SHADE.** Pulling gently on one side of the control cord or bead chain raises the shade; pulling down on the other side lowers it.

Fascia Installation Instructions

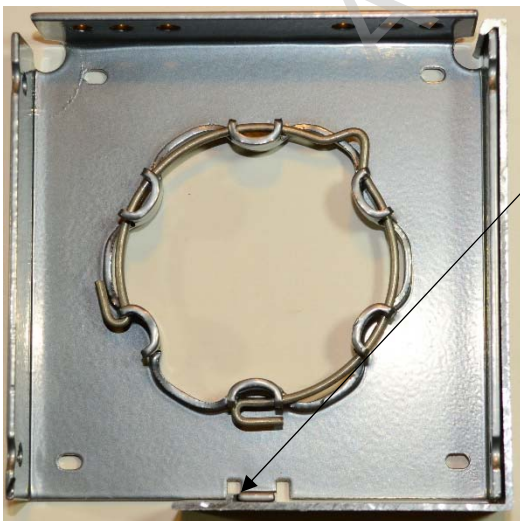
(Shown with ST50 motor brackets – Others install the same)



Step 1: Hook the fascia panel on the top front corner of both fascia brackets. The fascia panel will now be able to hang there.



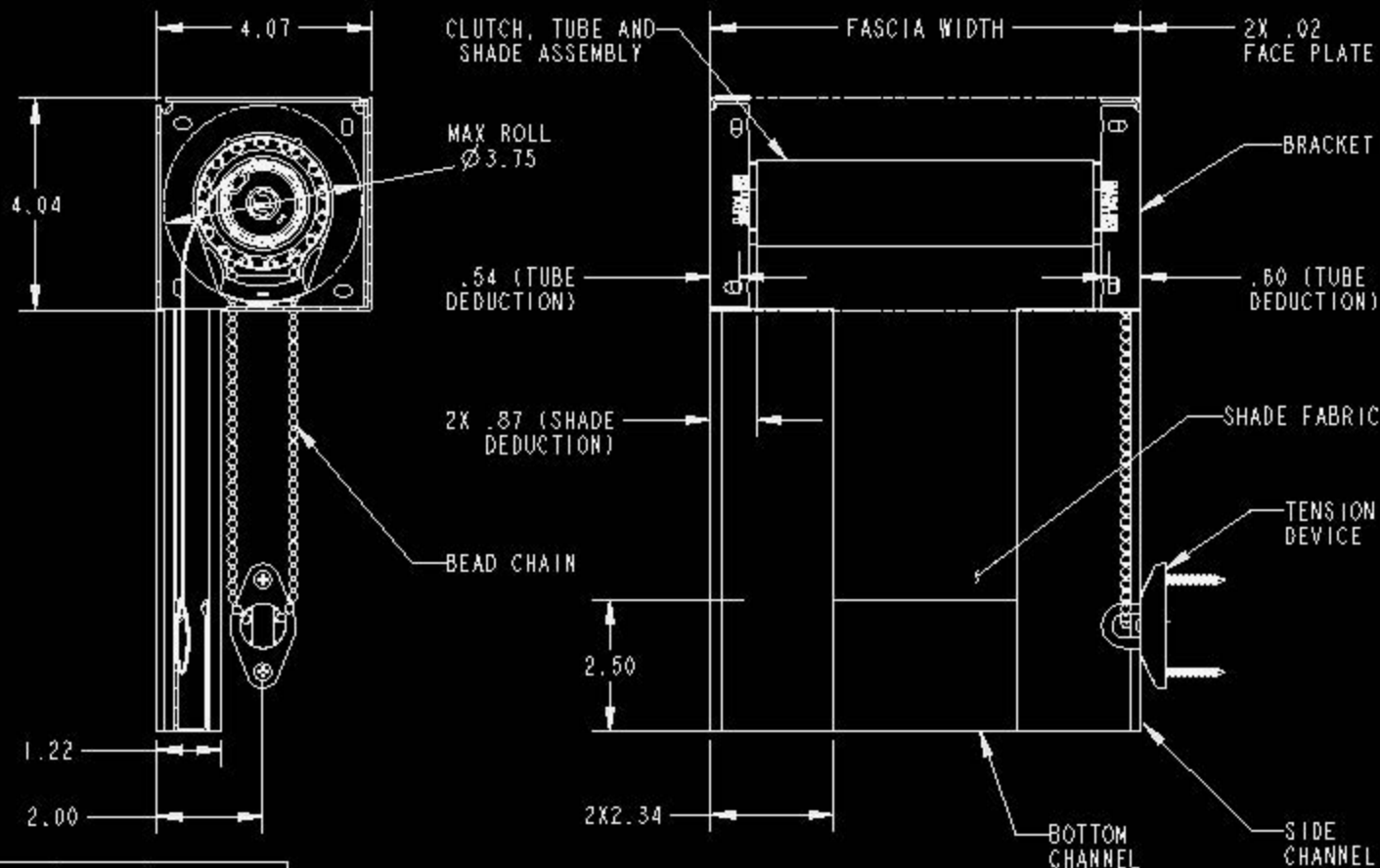
Step 2: Swing the fascia panel down so the rib on the inside of the fascia touches the tab on the bracket.



Step 3: Push on the bottom front edge of the fascia to snap in place. The internal rib of the fascia will move past the tab and lock in place.

R-SERIES 4in. FASCIA, RI6C53 CLUTCH, 1.50 DIA TUBE
RB581 BRACKET W/ SIDE CHANNELS

A2024



RollEase Headquarters
200 Harvard Avenue
Stamford, CT 06902-6320 USA
Office: 203.964.1573 / 800.552.5100
www.rollease.com



SCALE

NOT TO SCALE. DIMENSIONS IN INCHES.

DRAWN BY

EnZ

REVISION

1