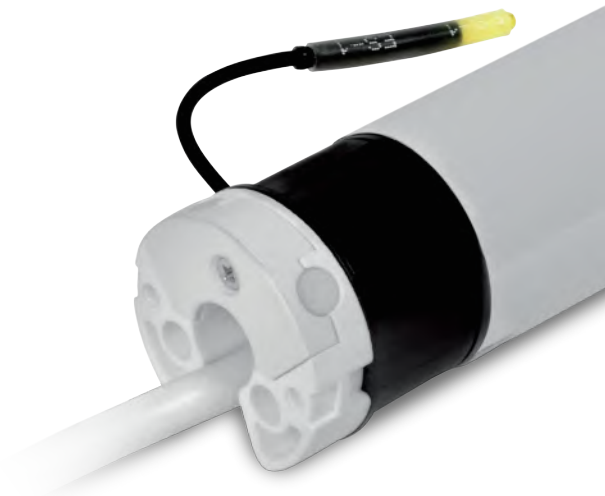


## XS4EZ

Electronic encoded type  
with built-in radio  
receiver

### SMART FEATURES

- ▶ Easy limit setting via radio
- ▶ Secure 434.15 MHz radio transmission
- ▶ Easy set up of group controls
- ▶ Up and down directions synchronized while setting the limits
- ▶ Noiseless soft brake



### MAIN FEATURES

Models	XS4EZ334	XS4EZ624
Torque	3 Nm	6 Nm
Speed	34 rpm	24 rpm
Rated current	0.90 A	1.20 A
Limit switch max turns	160	160

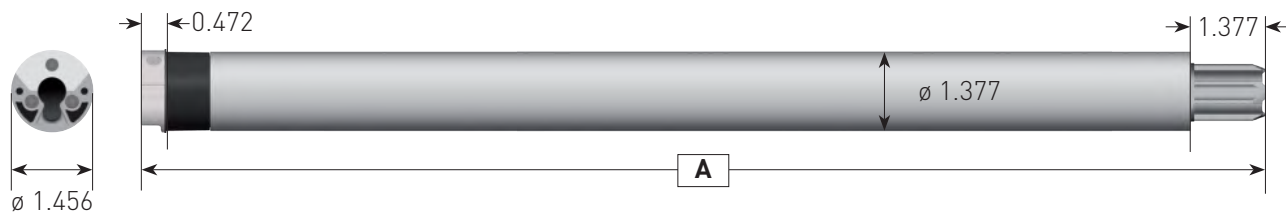
### TECHNICAL DATA

Power Supply	120 VAC / 60 Hz
Working temperature	14°F / 104°F
Duty rating	45 sec ON / 1 min OFF
Radio frequency	434.15 MHz
Protection	IP44

Standard cable length	8 ft
	4x18 AWG White - Neutral
	4x18 AWG Green - Ground
	4x18 AWG Black

### DIMENSIONS in

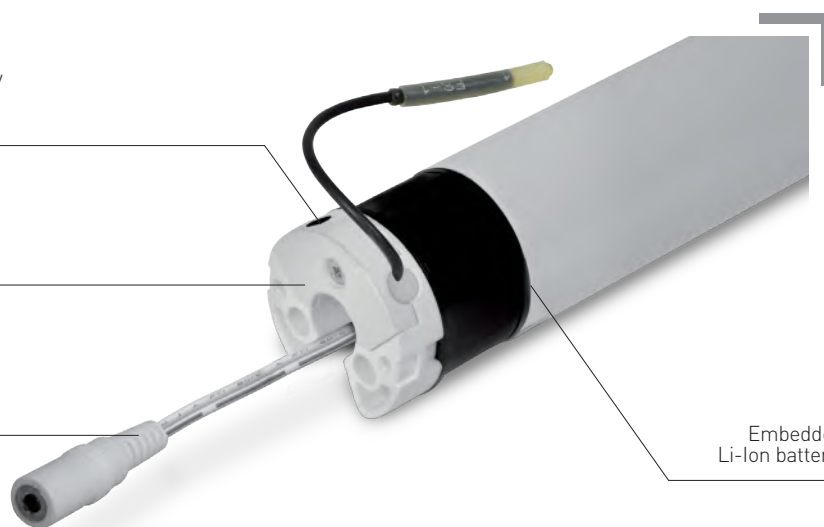
Model	A	Model	A
XS4EZ334	23.66	XS4EZ624	25.03



Setting buttons for easy setting and a quick troubleshooting

Built-in radio receiver

Charging cable



Embedded rechargeable Li-Ion battery motor version

## XSDC4 EZ B

Electronic encoded type with built-in radio receiver and Li-Ion battery

Embedded rechargeable Li-Ion battery motor

### MAIN FEATURES

#### Models

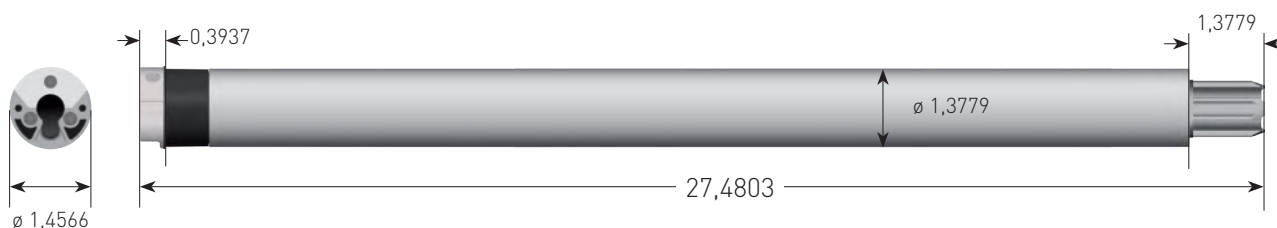
**XSDC4EZ326B**

Torque	3 Nm
Speed	26 rpm
Power	32 W
Current	2.9 A
Limit switch	Electronic
Max turns	160

### TECHNICAL DATA

Voltage	12 VDC
Duty rating	6 min
Radio frequency	434.15 MHz
Protection	IP30
Working temperature	-10°C / +40°C
Insulation class	III

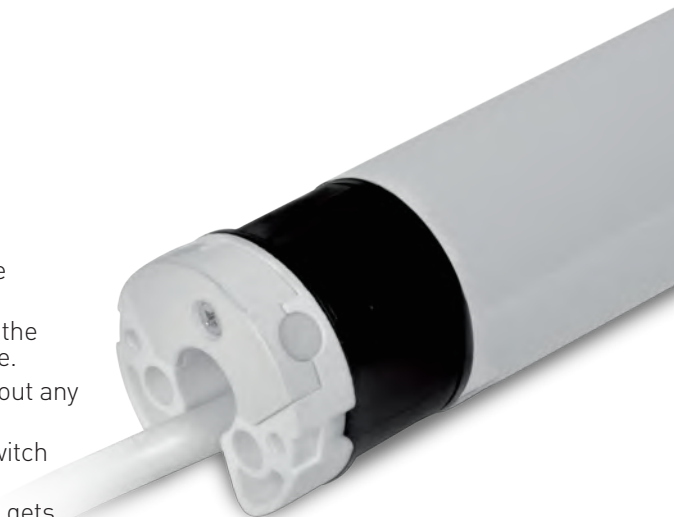
### DIMENSIONS in



## XS4E Electronic encoded type

### SMART FEATURES

- ▶ Easy limit adjustment via the setting tool with no need to access the motor head
- ▶ High accuracy of limits positions. The encoded magnet enclosed in the motor crown guarantees a perfect tracking of rotations of the shade.
- ▶ The capability of connecting in parallel several Gaposa motors without any additional switching units (relays).
- ▶ Motors can be bridged and controlled as a group by a single wall switch (with adequate amperage.)
- ▶ Automatic safety power cut-off during upward rotation (if the shade gets stuck while raising.)



### MAIN FEATURES

Models	XS4E334	XS4E624
Torque	3 Nm	6 Nm
Speed	34 rpm	24 rpm
Rated current	0.90 A	1.20 A
Limit switch max turns	160	160

### TECHNICAL DATA

Power Supply	120 VAC / 60 Hz
Working temperature	14°F / 104°F
Duty rating	45 sec ON / 1 min OFF
Radio frequency (type)	434.15 MHz
Protection	IP44

Standard cable length	8 ft
	4x18 AWG White - Neutral
	4x18 AWG Green - Ground
	4x18 AWG Black
	4x18 AWG Red

### DIMENSIONS in

Model	A	Model	A
XS4E334	23.66	XS4E624	25.03

