

Tutorial for making a Cat6 connector



Parts needed:

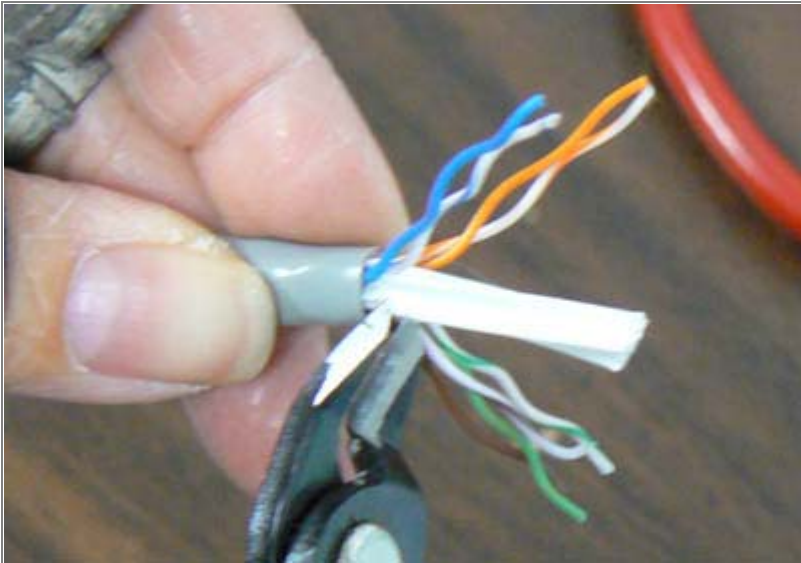
- CAT6 cable
- Stripping tool
- Crimper
- Cutter
- Connector



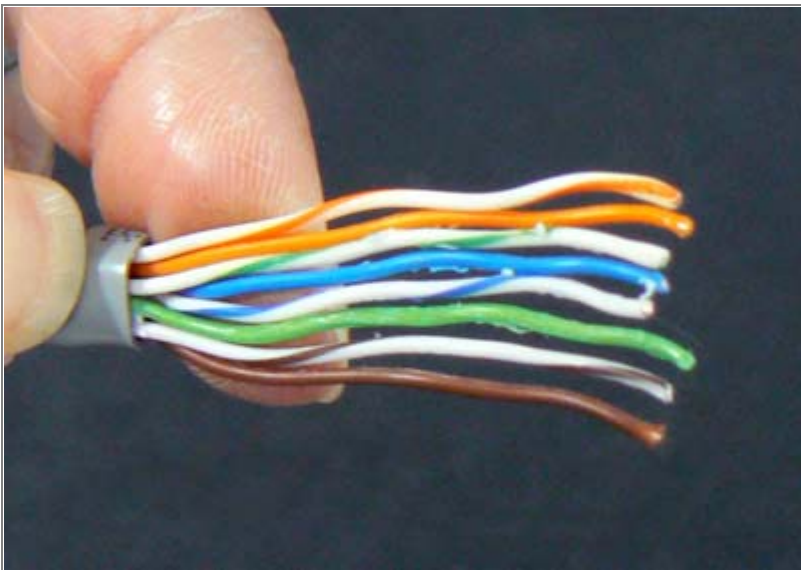
Strip off the last 1.25" of the cable jacket.



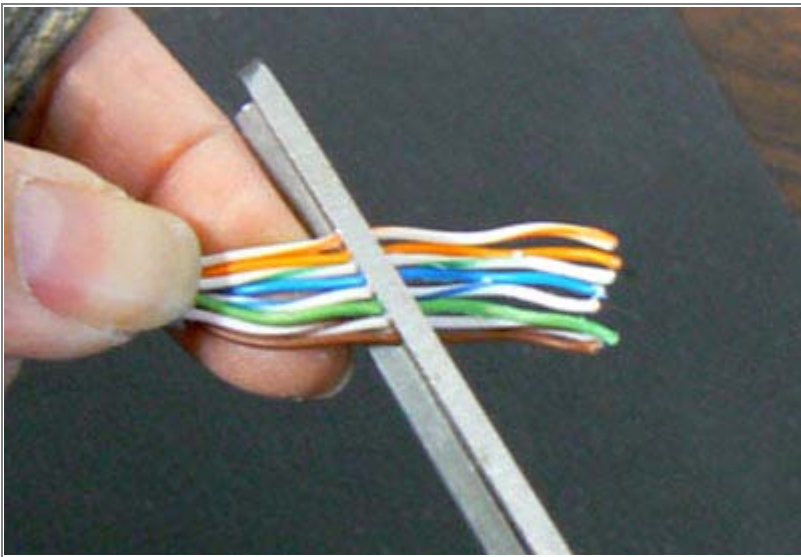
Another view.



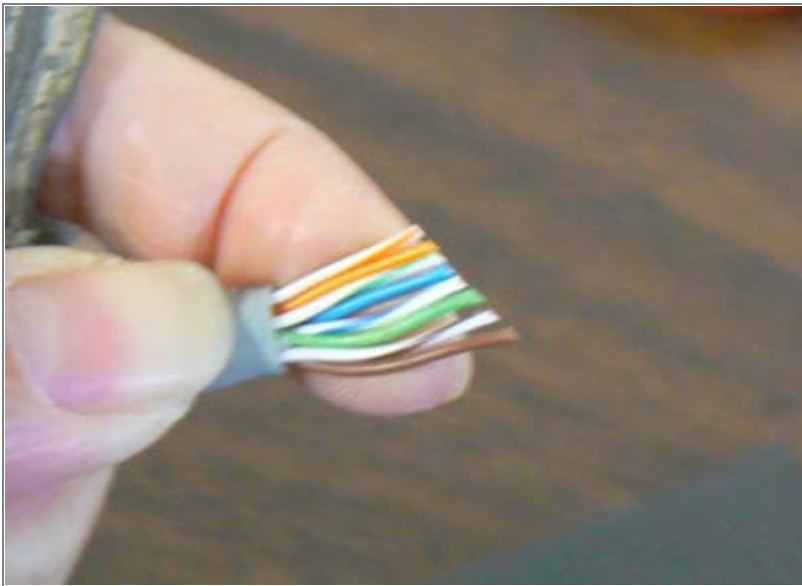
Peel back the wires, and trim the teflon tape.



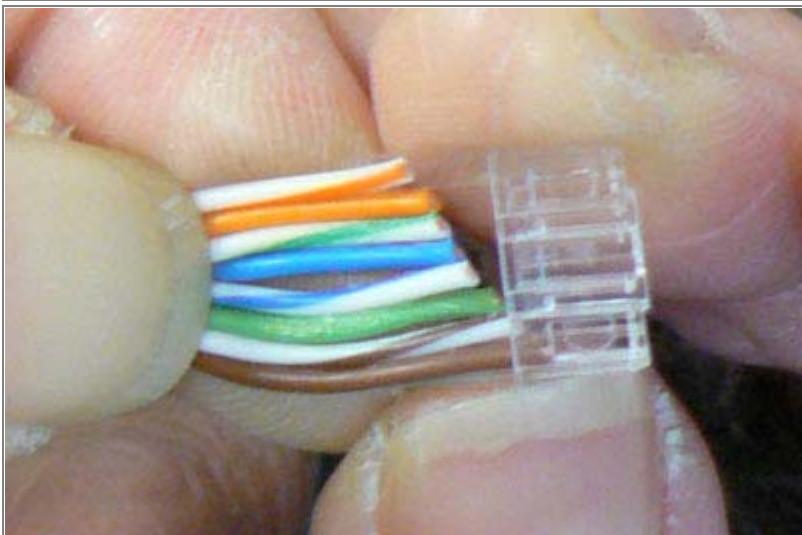
Straighten out the wires. They should be relatively in line with each other. Verify the **wire order**.



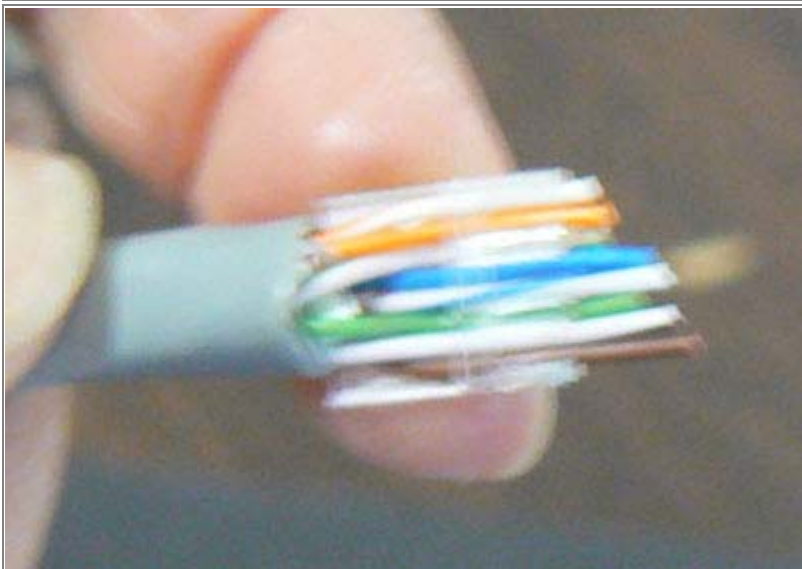
Cut the wires at an angle as shown.



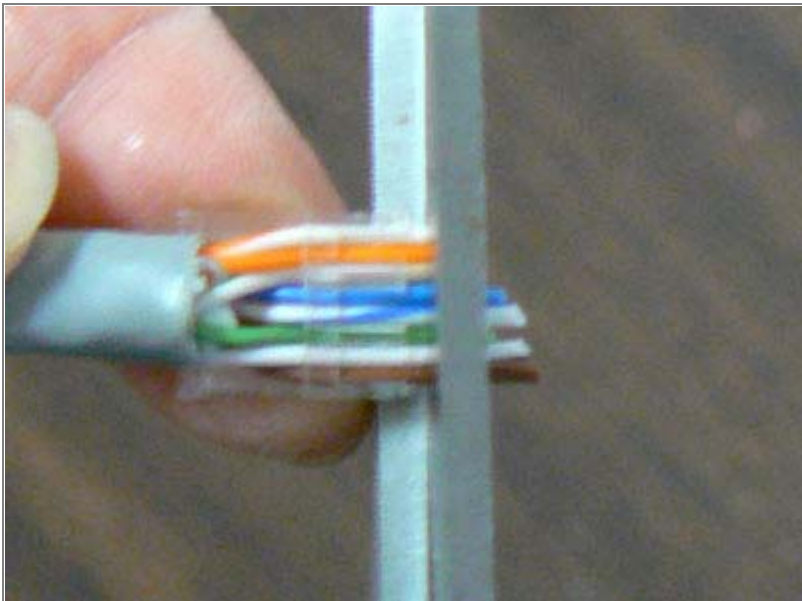
It should look something like this.



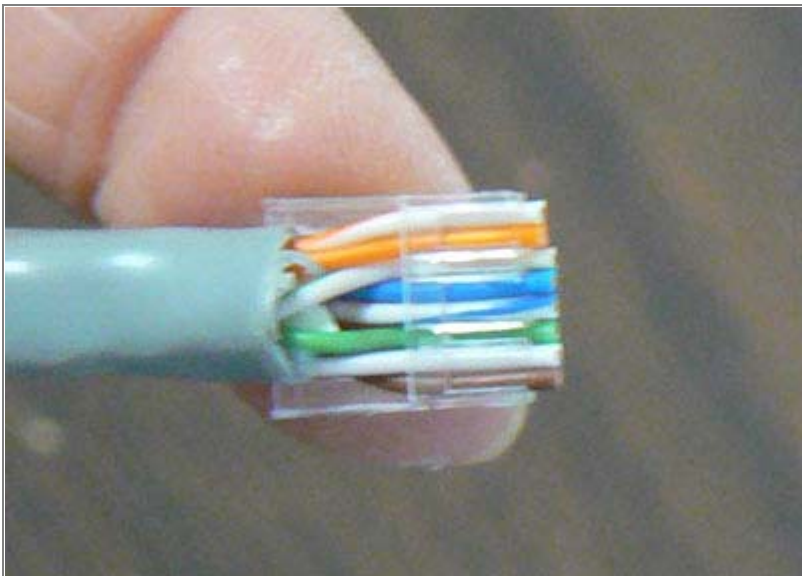
Slide the sleeve over the wires.



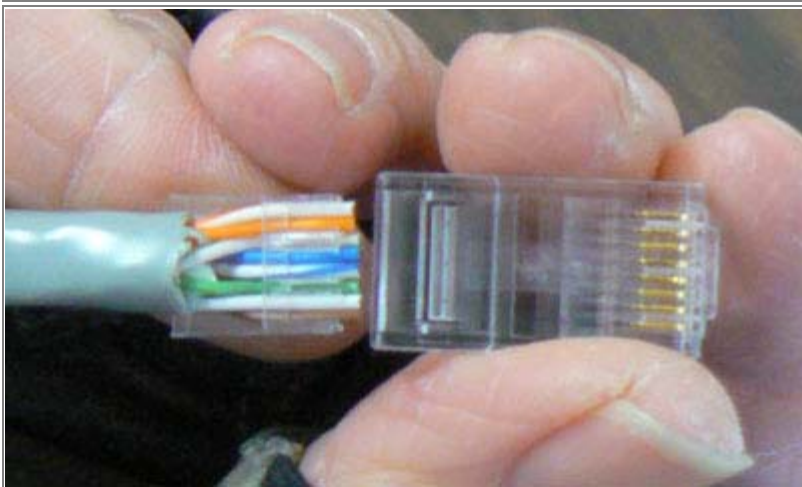
Make sure every wire goes through.



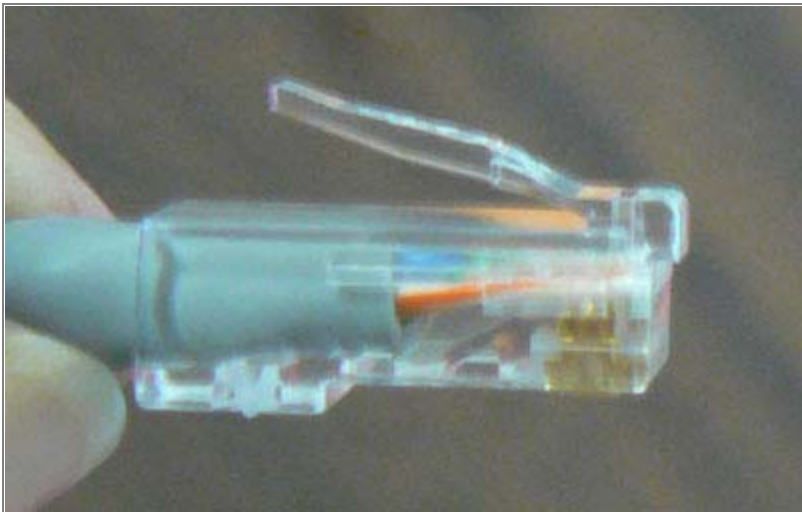
Trim the excess wires from the sleeve.



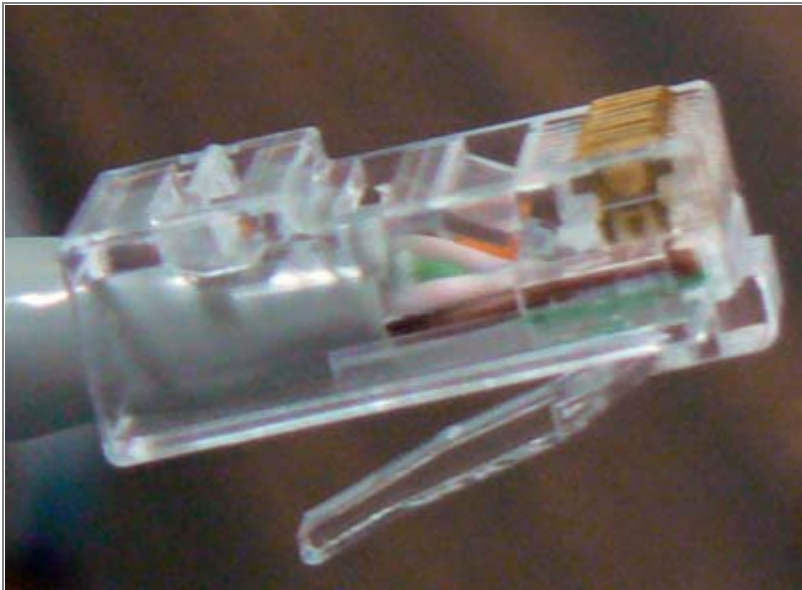
There should be just a little wire (about 0.5mm - 1.5mm) going beyond the plastic sleeve.



Slide the main connector onto the sleeve.



The sleeve will reach the end.



Another view.



Crimp the connector.

What is the wire order that I need?

You can follow any wire order that is consistent. Standard Cat6 cables will follow the TIA-586B standard. This standard is shown below.

Network wire color coding (TIA-568B compliant)

1



2



3



4



5



6



7



8

