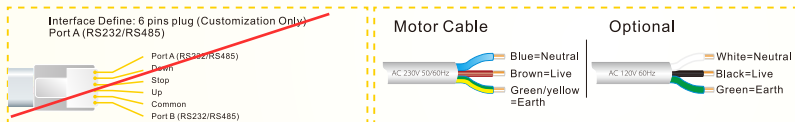
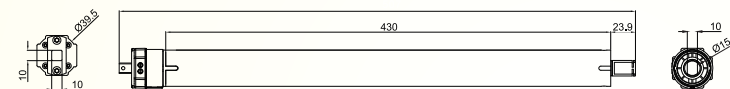


AM35/45 MEL Electronic Limit Radio Motor Manual



I. Main Features:

- Able to preset 6 limit positions, upper and lower limits and 4 more positions in the middle
- Dry contract interface for switch control, building centre control
- RS232/485 interface for building control, with bi-direction communication
- Available for dot move and continuous move
- Available for direction conversion
- High precision repeated limit position
- Stop by block for prevention of damage of system and object
- Receiving sensitivity -110dBm

RS485 Operations

1. Add and delete ID and Channel (default ID and Channel is "0")
2. Set the switch control way (default is for 4 wires switch)
3. Set the tilting angle (default level 4)
4. Set the motor sensitivity against obstacle (default medium sensitivity)
5. Rebound by obstacle ON/OFF, and set the rebound time (default rebound 0.1s)
6. Set RS485 serial port baud rate (default 2400, work with V2.5 RS485 operation software)

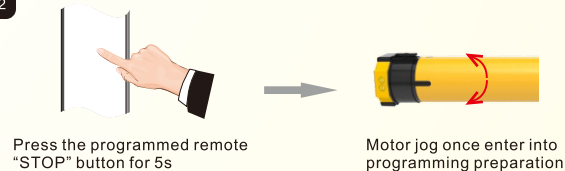
II. Operations

1. Programming Preparation

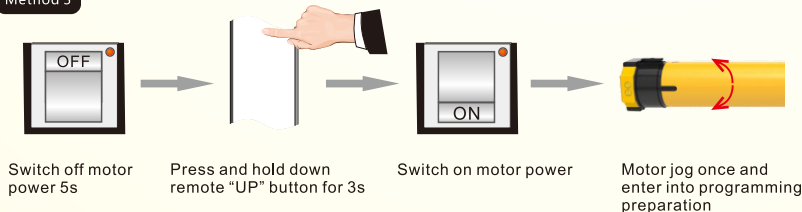
Method 1



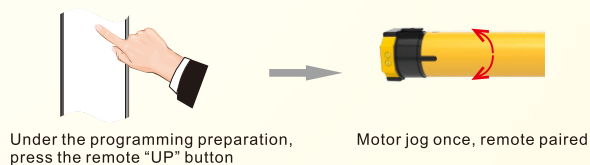
Method 2



Method 3

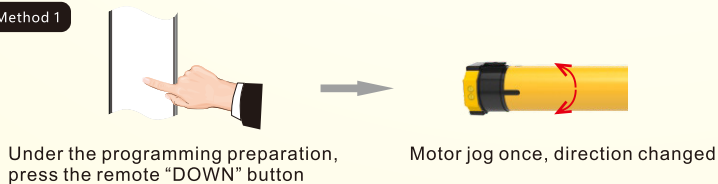


2. Pairing the remote

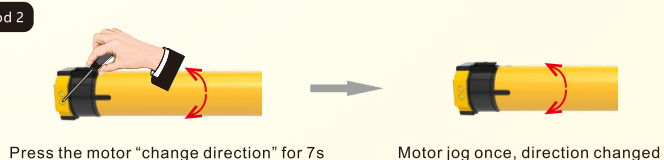


3. Change Direction

Method 1

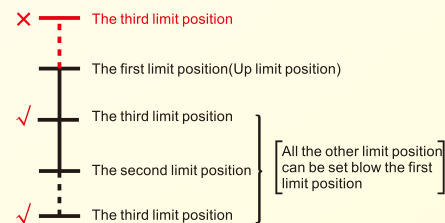


Method 2

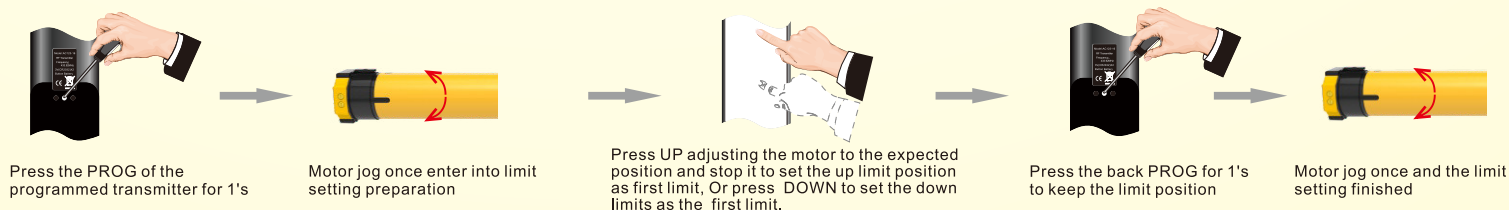


4. Limit position setting

- Maximum six different limit positions can be set, the furthest two positions called the UP and DOWN limit position, others called the middle limit positions;
- When the first limit position is the UP limit position (as right illustration), all other limit positions can only be set below this position; the same thing, when the first limit position is the DOWN limit position, all other limit positions can only be set above this position;
- Every limit position can be fine-tuned or deleted separately (The first limit position can only be fine-tuned but can't be deleted separately. It can be deleted when delete all memories);
- The motor stops at the next limit position after accepting once UP/DOWN order. When it reaches the UP limit position, the UP order is no use any more; when it reaches the DOWN limit position, the DOWN order is no use;
- Press the UP/DOWN button twice on the transmitter at the speed of once a second, motor will go directly to the UP/DOWN limit position without any stop at the middle limit

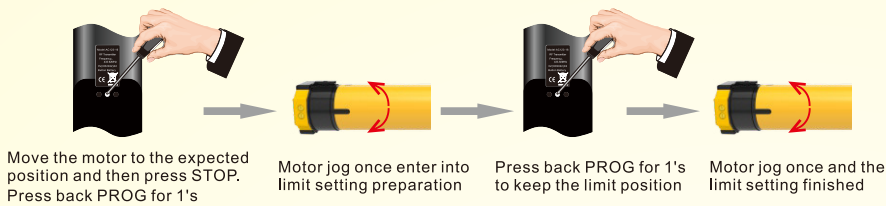


5. First limit position setting



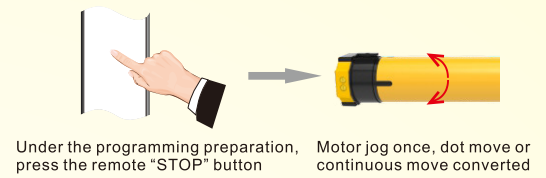
6. Other limit position setting

If there's no any action within 30's, the motor will exit from limit position preparation automatically

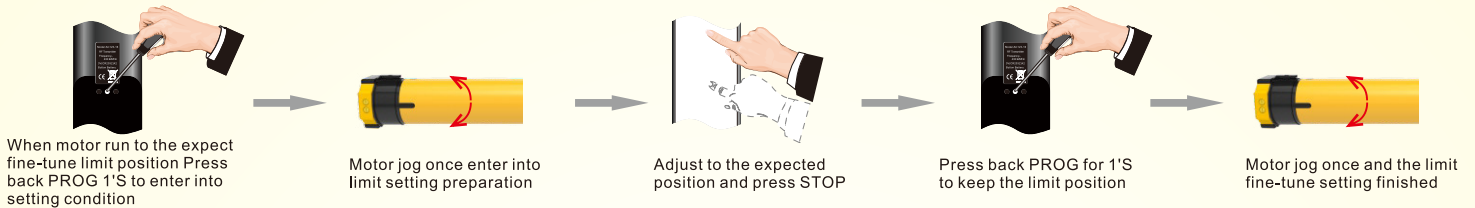


7. Dot move & Continuous move convention

Remarks: Motor works at the first in continuous as default

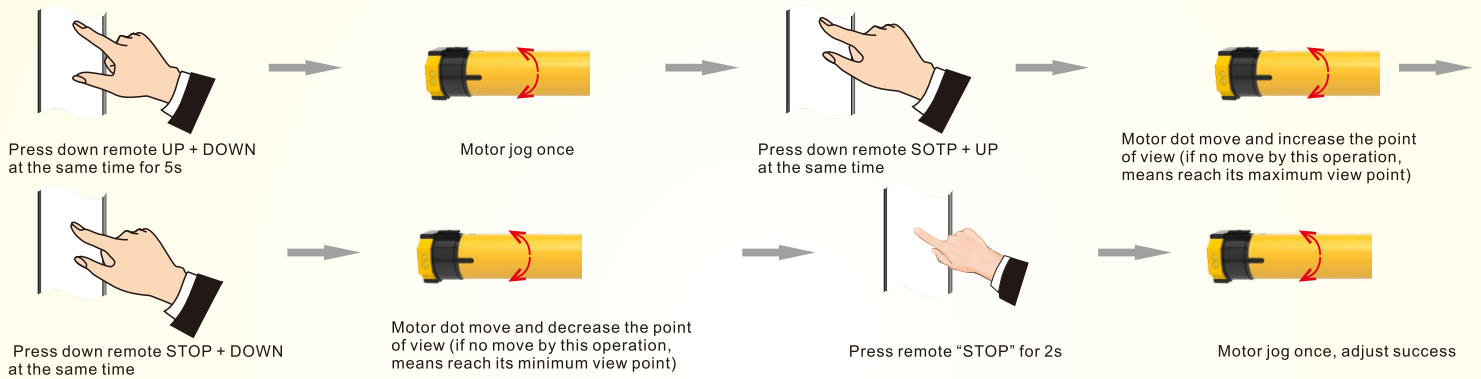


8. Limit position fine-tuning

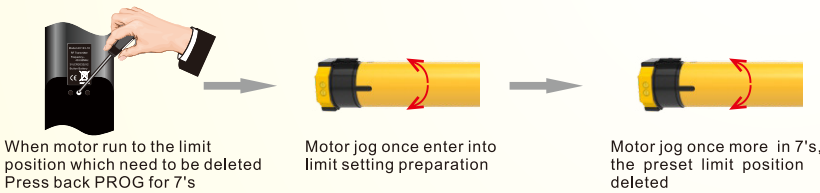


9. Dot Move Point of View adjustment

Remark: Motor enter into adjustment status, if no operation in 30s and then the motor will exit out of the dot move point of view adjustment

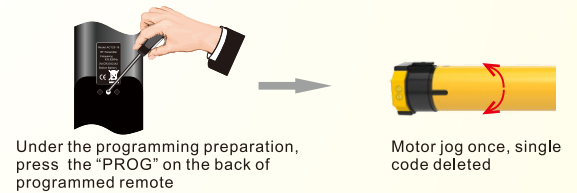


10. Delete the limit position



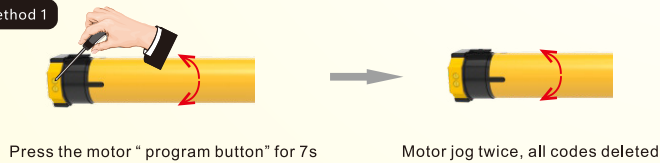
11. Delete Single Code

Remark: please select the channel to be deleted in advance.

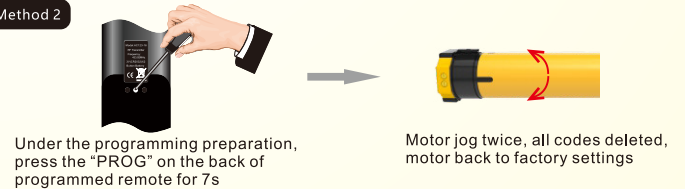


12. Delete All Codes

Method 1



Method 2



III. Trouble Shooting

Items	Problem	Matter	Shooting
1	After connecting with the power, the motor doesn't work or work slowly	A.Connected with wrong voltage B.Over loading C.Incorrect installation leads to motor stucking	A.Change to matched voltage B.Choose suitable motor torque C.Check the components
2	The motor stops suddenly during working	A.The motor has been exceeded overheating protection, B.Power was cut off	A.After the motor with natural cooling, it will come back to work again B.The motor will come back to work once power on



In accordance with the provisions of the Directive of the European Parliament and of the Council 2012/19 / EU of 4 July 2012 on waste electrical and electronic equipment(WEEE), it is prohibited to place of used equipment together with other wastes, marked with crossed out wheeled bin symbol. The users are obliged to transfer their used equipment to a designated collection point for proper processing. The marking means, at the same time, that the equipment was put on the market after 13 August 2005. These legal obligations have been introduced to reduce the amount of waste generated from waste electrical and electronic equipment and to ensure an appropriate level of collection, recovery and recycling. The equipment does not contain any dangerous components, which would have any particularly negative impact on the environment and human health.



A-OK hereby declares that the drive covered by these instructions, when marked for input voltage 230V 50Hz and used as intended according to these instructions, is in compliance with the essential requirements of Directives 2014/53/EU declaration of conformity detailing standards and specifications used and stating all particulars for identification of the drive, name and address of the person(s) authorized to compile the technical file and empowered to draw up the declaration including place and date of issue can be contacted A-OK headquarters customer service at 0752-5717888.