

AOK RF Motor Programming Instructions

Motor Programming Instructions have been rewritten by <https://www.AVOutlet.com>

Please Read and Follow These Instructions.

Please use the motor programming instructions provided here. A copy of the AOK factory instructions are also provided for your reference.

Please read installation instructions and programming instructions completely prior to proceeding with installation and programming. Failure to do so can result in damage to the motor and or the shade.

Be prepared to stop the shade during programming. The shade will move continuously during some of the steps. You will need to be prepared to stop the motor using the remote control. Failure to stop the shade can result in shade or motor damage.

Only apply power to the motor being programmed regardless if the other motors have been programmed or not. This will prevent inadvertent interaction with other motors. This is not possible for motors with built-in batteries. Motors with built-in batteries must be put to sleep.

We recommend mapping out the installation before proceeding. This will reduce set-up time and make life easier. Decide the channels and or additional remotes to be assigned to each shade in the installation. Each shade should be completely programmed before moving to the next. Have the necessary remotes and controls ready prior to proceeding.

All motors programmed to the same RF channel will operate at the same time. If you want individual control of the motor, you must use separate channels on multi-channel remotes or separate single channel remotes

The remote controls are generally considered to be dummy devices as they do not store any motor or programming information. The motors are the intelligent devices. The motors store the shade operation limits in their memory and the motors also memorize the specific remotes or channels assigned to control them. Each motor can have up to 20 remote control channels controlling them.

Program Button Locations

Motor Head – The program button on the motor head is typically located in a hole opposite the antenna. Please use a large paper clip to press the button.

AC123 Remote Control (Hand Held Remote with physical buttons) – The program button is located in a hole on the back of the remote control. Please use a large paper clip to press the button.

AC140 Remote Control (Hand Held Touch Sensitive Remote) – Remove the battery cover from the back of the remote control. The program button is the button label as “Set”.

AC135 Remote Control (Wall Switch) – Remove the battery cover from the back of the remote control. The program button is located on the lower left in a hole and is labelled as “Learn”. Please use a large paper clip to press the button.

Please read the previous page before proceeding!

Sleep and Wake Built-in Battery RF Motors

This procedure also works for the 12VDC externally powered motors or you can remove the power connection.

Sleep (Motor Off)

Press and Hold the program button on the motor head for app. 7 seconds. The motor will jog once at 1 second and a long beep will be heard at 7 seconds.

Wake (Motor On)

Press and Hold the program button on the motor head for app. 1 seconds. The motor will beep once.

Programming a Motor

There is limited time to complete these steps. A pause longer than 30 seconds without activity may cause the motor to stop responding and you may need to start over.

Step 1 - Record a Channel to the Motor Memory

1-A) Select the remote control and channel you want to use.

1-B) Press and Hold the program button on the motor head for 1 second. The motor will beep and jog once. A jog is a movement in both directions.

1-C) Within 10 seconds, Press the “Up” button on the selected remote control. The motor will jog once.

If the motor does not respond, proceed to “Resetting Motor...” and reset the motor. If working with a built-in battery motor, you might need to wake the motor first.

Step 2 - **DO NOT SKIP** - Check Motor Direction and Change if Necessary –

2-A) Check the direction of operation (the motor will operate in momentary fashion). Confirm that the UP button brings the shade UP and DOWN brings the shade DOWN.

2-B) **Changing the direction (If needed)**, Press and Hold the **STOP** button for 5 seconds until the motor jogs, then release. A jog is a movement in both directions.

2-C) Press the Down button. The Motor will jog once.

2-D) Check the motor direction again.

Step 3 - Set Lower and Upper Shade Limits

This step can be performed in either order, but we prefer to start with the lower limit as this ensures the material is under proper tension. If you start at the top, the shade material may be tight or loose and operation may not be repeatable.

3-A) Press and Hold the program button on the back of the remote control for 1 second. The shade will jog.

3-B) Move the shade to the desired lower limit position using the remote control. The shade will move in short movements with momentary button presses. A long press will result in the shade moving continuously. Be prepared to stop the shade using the remote control.

3-C) Press and Hold the program button on the back of the remote control for 1 second. The shade will jog. The lower limit is now programmed.

3-D) Move the shade to the desired upper limit position using the remote control. The shade will move in short movements with momentary button presses. A long press will result in the shade moving continuously. Be prepared to stop the shade using the remote control.

3-E) Press and Hold the program button on the back of the remote control for 1 second. The shade will jog.

3-F) Press and Hold the program button on the back of the remote control for 1 second again. The shade will jog. The upper limit is now programmed.

The basic shade motor programming is now complete. The shade will move in automatically to the upper and lower limits with a momentary press of the buttons.

We recommend performing any additional programming like intermediate positions and additional channels of control before moving to the next motor.

Intermediate Stopping Positions

A total of 6 stopping positions can be programmed into the motor memory. 1 Upper, 1 Lower and up to 4 intermediates. The intermediate stopping points can be added or deleted at any time after initial programming.

Please note the remote controls do not have dedicated buttons to activate the intermediate positions. The motor will index (stop) to each stopping point while moving in either direction. You can bypass the intermediate positions by pressing the direction buttons on the remote control twice with a 1 second pause between presses.

A) Move the shade to the desired upper limit position using the remote control.

B) Press and Hold the program button on the back of the remote control for 1 second. The shade will jog.

C) Press and Hold the program button on the back of the remote control for 1 second again. The shade will jog. The intermediate position is now programmed.

Adjusting the Stopping Points

- A) Move the shade to its current stopping point.
- B) Press and Hold the program button on the back of the remote control for 1 second. The shade will jog.
- C) Adjust to a new stopping point. Move the shade to the desired position using the remote control. The shade will move in short movements with momentary button presses. A long press will result in the shade moving continuously. Be prepared to stop the shade using the remote control.
- D) Press and Hold the program button on the back of the remote control for 1 second. The shade will jog.

Adding Remote Controls or Channels

- A) Press and Hold the Stop button on current remote/channel that controls the motor for 5 seconds. The motor will jog once.
- B) Select the new remote control or channel on the same remote control.
- C) Press the up button on the new remote/channel. The motor will jog once. The motor will now respond to all channels that have been added.

Deleting Remote Controls or Channels

- A) Select the remote-control channel that you want to delete.
- B) Press and Hold the Stop button for 5 seconds. The motor will jog once.
- C) Press and Hold the program button on the back of the remote control for 1 second. The shade will jog. The channel has now been deleted.

Resetting Motor Using the Motor Head

(4 short presses followed by a long press)

- A) Briefly Press the program button on the motor. The motor will beep.
- B) Briefly Press the program button on the motor. The motor will beep.
- C) Briefly Press the program button on the motor. The motor will beep.
- D) Briefly Press the program button on the motor. The motor will beep.
- E) Press and Hold the program button on the motor for 3 seconds. The motor will jog twice. A jog is a movement in both directions.

Note: The motor should not jog during the first 4 steps. You are holding the button too long if it does and the motor will not reset.

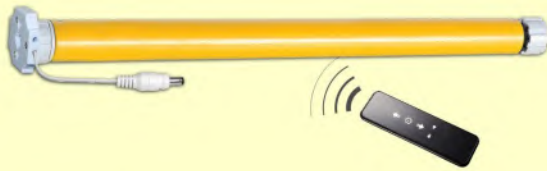
Resetting Motor Using a Remote Control

Put any other motors using the same channel to sleep or they will be reset.

- A) Select the remote control or channel that controls the motor.
- B) Press and Hold the Stop button for 5 seconds. The motor will jog once.
- C) Within 10 seconds Press and Hold the program button on the back of the remote control for app. 7 seconds. The motor will jog once at 1 second and two more times at 7 seconds.

AM25 Low-Power Dissipation DC Motor User Manual

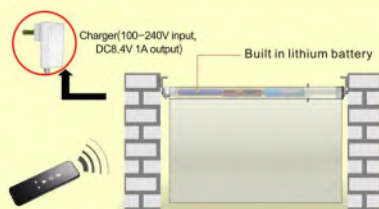
I. Main features



- Energy Saving patent design, available for connecting with external battery pole or solar panel.
- Self-checking and correction of brake offset.
- Electronic limit setting, enjoyable programmable 6 limits for option (2 ends limits and 4 middle limits).
- Over loading protection, over-charging & lower-charging protection.
- One fully charge could last 4-6 months with operation 1 minute a day.

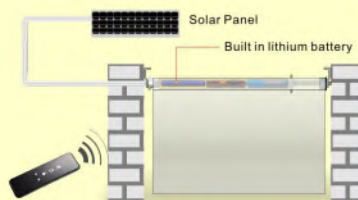
II. Applications

Application 1: Built-in Lithium Battery



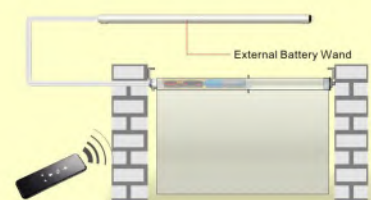
Please disconnect charger with the motor when its indicator light turn to green.

Application 2: Solar Panel Power



It takes 2 days to fulfill the battery in sunny day.

Application 3: Battery wand Power



III. Operation

1. Power ON/OFF function

* After switching off power, the motor wouldn't able to receive remote signals.

Switch Power ON



Pressing down and hold the PROG for 1s



Motor beep once and switch on power

Switch Power OFF



Pressing down and hold the PROG for 7s (Motor jog once in 1s)



Motor long beep 1s and switch power off in 7s

2. Programming



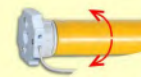
Press PROG for 1s



Motor jog once



Press UP within 10s



Motor jog once and the program finished

3. Change direction

* In case of the working direction was upside down, then follows below step, otherwise, please skips to limit setting step.



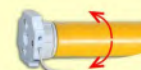
Press STOP of the programmed transmitter for 5s



Motor jog once



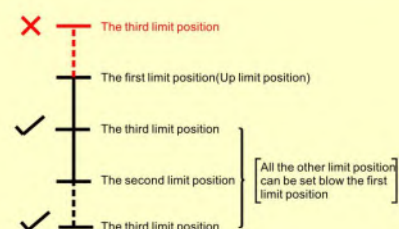
Press Down within 10s



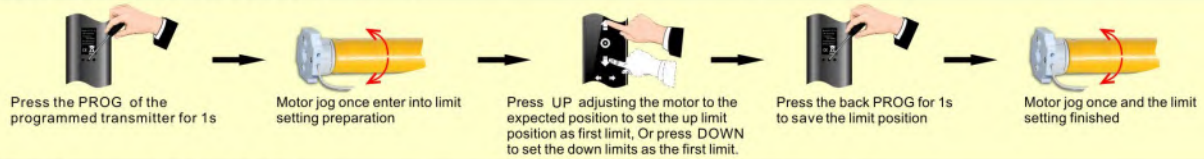
Motor jog once and the direction changed

4. Limit position setting

- Maximum six different limit positions can be set, the furthest two positions called the UP and DOWN limit position, others called the middle limit positions;
- When the first limit position is the UP limit position (as right illustration), all other limit positions can only be set below this position; the same thing, when the first limit position is the DOWN limit position, all other limit positions can only be set above this position;
- Every limit position can be fine-tuned or deleted separately (The first limit position can only be fine-tuned but can't be deleted separately. It can be deleted when delete all memories);
- The motor stops at the next limit position after accepting once UP/DOWN order. When it reaches the UP limit position, the UP order is no use any more; when it reaches the DOWN limit position, the DOWN order is no use;
- Press the UP/DOWN button twice on the transmitter at the speed of once a second, motor will go directly to the UP/DOWN limit position without any stop at the middle limit



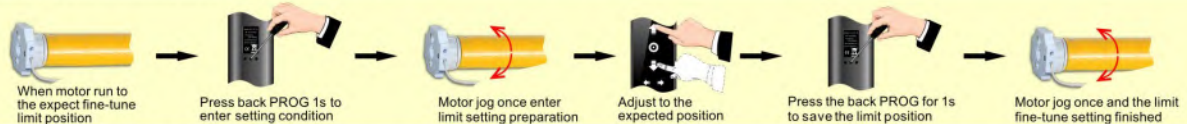
5.First limit position setting (If there's no any action within 30's , the motor will exit from limit position preparation automatically)



6.Other limit position setting * (If there's no any action within 30 s , the motor will exit from limit position preparation automatically)



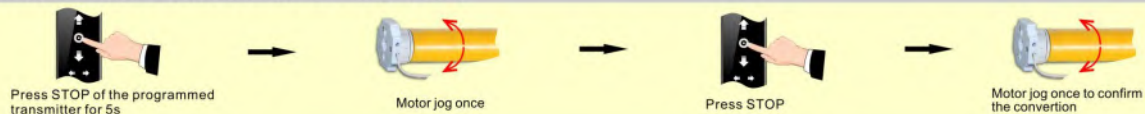
7.Limit position fine-tuning *(If there's no any action within 30 s , the motor will exit from limit position preparation automatically)



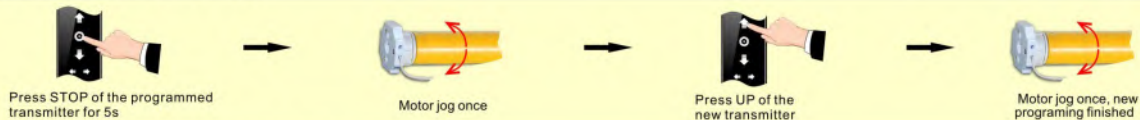
8.Delete the limit position * (The first limit position can't be deleted)



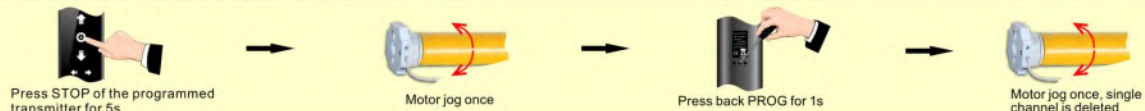
9.Dot move and continuous move conversion



10. Add the new transmitter



11.Delete single channel memory



12.Delete all the memories * After deleting all codes, the motor will be restored to factory setting.



IV. Trouble Shooting

Items	Problem	Matter	Shooting
1	Motor does not run, or run slowly	a.Over-load protection b.Non-proper installation	a.Exchange with proper motor b.Check if proper installed
2	Motor does not run, or run slowly	a.Motor reaches the limit b.Out of battery	a.Normal situation b.Recharge the battery
3	Motor does not run, or run slowly	a.In power off mode b.Out of battery	a.Power on motor b.Recharge the battery

4.0103.0012(V1.1)